



MOF Monoclonal Antibody

Catalog No	BYab-01003
Isotype	IgG
Reactivity	Human
Applications	WB;IHC;IF;ELISA
Gene Name	KAT8
Protein Name	Histone acetyltransferase KAT8
Immunogen	Purified recombinant fragment of human MOF expressed in E. Coli.
Specificity	MOF Monoclonal Antibody detects endogenous levels of MOF protein.
Formulation	Ascitic fluid containing 0.03% sodium azide,0.5% BSA, 50%glycerol.
Source	Monoclonal, Mouse
Purification	Affinity purification
Dilution	Western Blot: 1/500 - 1/2000. Immunohistochemistry: 1/200 - 1/1000. Immunofluorescence: 1/200 - 1/1000. ELISA: 1/10000. Not yet tested in other applications.
Concentration	1 mg/ml
Purity	≥90%
Storage Stability	-20°C/1 year
Synonyms	KAT8; MOF; MYST1; PP7073; Histone acetyltransferase KAT8; Lysine acetyltransferase 8; MOZ; YBF2/SAS3, SAS2 and TIP60 protein 1; MYST-1; hMOF
Observed Band	
Cell Pathway	Nucleus . Chromosome .
Tissue Specificity	Brain,Embryo,Heart,Uterus,
Function	catalytic activity:Acetyl-CoA + histone = CoA + acetylhistone.,function:Histone acetyltransferase which may be involved in transcriptional activation. May influence the function of ATM.,similarity:Belongs to the MYST (SAS/MOZ) family.,similarity:Contains 1 C2HC-type zinc finger.,similarity:Contains 1 chromo domain.,subunit:Component of a multisubunit histone acetyltransferase complex (MSL) at least composed of the MOF/MYST1, MSL1/hampin, MSL2L1 and MSL3L1. Interacts with the chromodomain of MORF4L1/MRG15. Interacts with ATM through the chromodomain.,

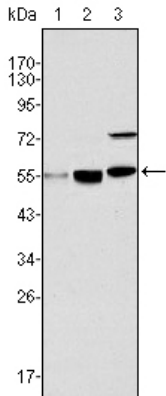
Nanjing BYabscience technology Co.,Ltd



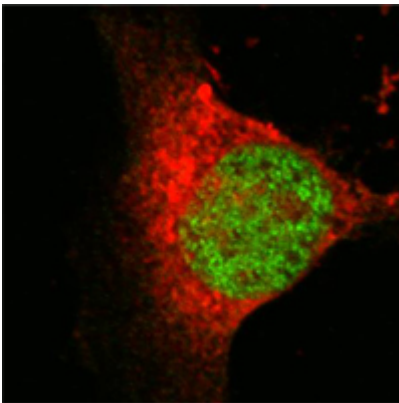
Background	This gene encodes a member of the MYST histone acetylase protein family. The encoded protein has a characteristic MYST domain containing an acetyl-CoA-binding site, a chromodomain typical of proteins which bind histones, and a C2HC-type zinc finger. Multiple transcript variants encoding different isoforms have been found for this gene. [provided by RefSeq, Feb 2012],
matters needing attention	Avoid repeated freezing and thawing!
Usage suggestions	This product can be used in immunological reaction related experiments. For more information, please consult technical personnel.



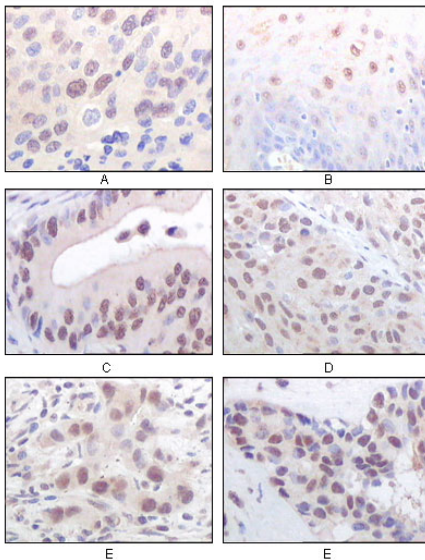
Products Images



Western Blot analysis using MOF Monoclonal Antibody against HeLa (1), HepG2 (2) and SMMC-7721 (3) cell lysate.



Immunohistochemistry analysis of paraffin-embedded human esophageal squamous cell carcinoma (A), normal esophagus epithelium (B), rectum adenocarcinoma (C), lung squamous cell carcinoma (D), breast infiltrating carcinoma (E), and breast infiltrating carcinoma (E).



Confocal immunofluorescence analysis of Eca 109 cells using MOF Monoclonal Antibody (green), showing nuclear localization.