



# LysRS Monoclonal Antibody

<b>Catalog No</b>	BYab-00999
<b>Isotype</b>	IgG
<b>Reactivity</b>	Human
<b>Applications</b>	WB;IHC;IF;ELISA
<b>Gene Name</b>	KARS
<b>Protein Name</b>	Lysyl-tRNA synthetase
<b>Immunogen</b>	Purified recombinant fragment of LysRS(aa90-174) expressed in E. Coli.
<b>Specificity</b>	LysRS Monoclonal Antibody detects endogenous levels of LysRS protein.
<b>Formulation</b>	Ascitic fluid containing 0.03% sodium azide,0.5% BSA, 50%glycerol.
<b>Source</b>	Monoclonal, Mouse
<b>Purification</b>	Affinity purification
<b>Dilution</b>	WB: 1/500 - 1/2000. IHC: 1/200 - 1/1000. ELISA: 1/10000.. IF 1:50-200
<b>Concentration</b>	1 mg/ml
<b>Purity</b>	≥90%
<b>Storage Stability</b>	-20°C/1 year
<b>Synonyms</b>	KARS; KIAA0070; Lysine--tRNA ligase; Lysyl-tRNA synthetase; LysRS
<b>Observed Band</b>	
<b>Cell Pathway</b>	[Isoform Cytoplasmic]: Cytoplasm, cytosol . Cytoplasm . Nucleus . Cell membrane ; Peripheral membrane protein . Secreted . Secretion is induced by TNF-alpha (PubMed:15851690). Cytosolic in quiescent mast cells. Translocates into the nucleus in response to mast cell activation by immunoglobulin E (PubMed:23159739) . . ; [Isoform Mitochondrial]: Mitochondrion .
<b>Tissue Specificity</b>	Bone marrow,Brain,Cerebellum,Hepatoma,Placenta,
<b>Function</b>	catalytic activity:ATP + L-lysine + tRNA(Lys) = AMP + diphosphate + L-lysyl-tRNA(Lys).,similarity:Belongs to the class-II aminoacyl-tRNA synthetase family.,subunit:Homodimer (By similarity); also part of a multisubunit complex that groups tRNA ligases for Arg, Asp, Glu, Gln, Ile, Leu, Lys, Met and Pro.,
<b>Background</b>	Aminoacyl-tRNA synthetases are a class of enzymes that charge tRNAs with their cognate amino acids. Lysyl-tRNA synthetase is a homodimer localized to the cytoplasm which belongs to the class II family of tRNA synthetases. It has been shown to be a target of autoantibodies in the human autoimmune diseases, polymyositis or dermatomyositis. Alternatively spliced transcript variants encoding

Nanjing BYabscience technology Co.,Ltd



different isoforms have been found for this gene. [provided by RefSeq, Jul 2008],

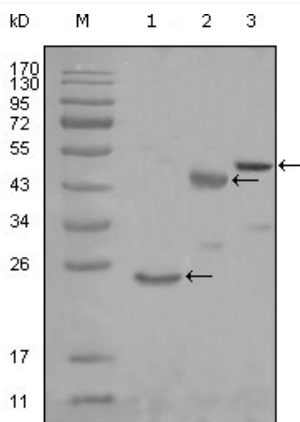
**matters needing attention**

Avoid repeated freezing and thawing!

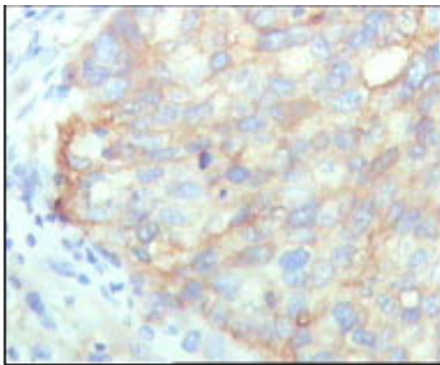
**Usage suggestions**

This product can be used in immunological reaction related experiments. For more information, please consult technical personnel.

## Products Images



Western Blot analysis using LysRS Monoclonal Antibody against truncated Trx-LysRS recombinant protein (1), truncated MBP-LysRS (aa90-174) and full length LysRS (aa1-188) transfected CHO-K1 cell lysate (3).



Immunohistochemistry analysis of paraffin-embedded human cervical carcinoma, showing cytoplasmic localization with DAB staining using LysRS Monoclonal Antibody.