



LEDGF Monoclonal Antibody

Catalog No	BYab-00997
Isotype	IgG
Reactivity	Human;Rat;Monkey
Applications	WB;IHC;IF;ELISA
Gene Name	PSIP1
Protein Name	PC4 and SFRS1-interacting protein
Immunogen	Purified recombinant fragment of human LEDGF expressed in E. Coli.
Specificity	LEDGF Monoclonal Antibody detects endogenous levels of LEDGF protein.
Formulation	Ascitic fluid containing 0.03% sodium azide,0.5% BSA, 50%glycerol.
Source	Monoclonal, Mouse
Purification	Affinity purification
Dilution	Western Blot: 1/500 - 1/2000. Immunohistochemistry: 1/200 - 1/1000. Immunofluorescence: 1/200 - 1/1000. ELISA: 1/10000. Not yet tested in other applications.
Concentration	1 mg/ml
Purity	≥90%
Storage Stability	-20°C/1 year
Synonyms	PSIP1; DFS70; LEDGF; PSIP2; PC4 and SFRS1-interacting protein; CLL-associated antigen KW-7; Dense fine speckles 70 kDa protein; DFS 70; Lens epithelium-derived growth factor; Transcriptional coactivator p75/p52
Observed Band	
Cell Pathway	Nucleus . Remains chromatin-associated throughout the cell cycle.
Tissue Specificity	Widely expressed. Expressed at high level in the thymus. Expressed in fetal and adult brain. Expressed in neurons, but not astrocytes. Markedly elevated in fetal as compared to adult brain. In the adult brain, expressed in the subventricular zone (SVZ), in hippocampus, and undetectable elsewhere. In the fetal brain, expressed in the germinal neuroepithelium and cortical plate regions.
Function	disease:A chromosomal aberration involving PSIP1 is associated with pediatric acute myeloid leukemia (AML) with intermediate characteristics between M2-M3 French-American-British (FAB) subtypes. Translocation t(9;11)(p22;p15) with NUP98. The chimeric transcript is an in-frame fusion of NUP98 exon 8 to PSIP1/LEDGF exon 4.,domain:Residues 340-417 are necessary and sufficient for the interaction with HIV-1 IN (IBD domain).,function:Transcriptional coactivator

Nanjing BYabscience technology Co.,Ltd



involved in neuroepithelial stem cell differentiation and neurogenesis. Involved in particular in lens epithelial cell gene regulation and stress responses. May play an important role in lens epithelial to fiber cell terminal differentiation. May play a protective role during stress-induced apoptosis. Isoform 2 is a more general and stronger transcriptional coactivator. Isoform 2 may also act as an adapter to coordinate pre-mRNA splicing

Background

disease:A chromosomal aberration involving PSIP1 is associated with pediatric acute myeloid leukemia (AML) with intermediate characteristics between M2-M3 French-American-British (FAB) subtypes. Translocation t(9;11)(p22;p15) with NUP98. The chimeric transcript is an in-frame fusion of NUP98 exon 8 to PSIP1/LEDGF exon 4.,domain:Residues 340-417 are necessary and sufficient for the interaction with HIV-1 IN (IBD domain).,function:Transcriptional coactivator involved in neuroepithelial stem cell differentiation and neurogenesis. Involved in particular in lens epithelial cell gene regulation and stress responses. May play an important role in lens epithelial to fiber cell terminal differentiation. May play a protective role during stress-induced apoptosis. Isoform 2 is a more general and stronger transcriptional coactivator. Isoform 2 may also act as an adapter to coordinate pre-mRNA splicing. Cellular cofactor for lentiviral integration.,PTM:Phosphorylated upon DNA damage, probably by ATM or ATR.,similarity:Belongs to the HDGF family.,similarity:Contains 1 PWWP domain.,subcellular location:Remains chromatin-associated throughout the cell cycle.,subunit:Monomer. Interacts with IFRD1/PC4. Isoform 2 interacts with SFRS1. Isoform 1 interacts with lentiviral integrase and acts as a chromatin tethering factor to the chromosomal DNA. Isoform 1 interacts in particular with the human HIV-1 integrase protein (HIV-1 IN), determining its nuclear localization, its tight association with chromatin and its protection from the proteasome. Isoform 1 interacts also with HIV-2 IN. Isoform 2 does not interact with HIV-1 IN.,tissue specificity:Widely expressed. Expressed at high level in the thymus. Expressed in fetal and adult brain. Expressed in neurons, but not astrocytes. Markedly elevated in fetal as compared to adult brain. In the adult brain, expressed in the subventricular zone (SVZ), in hippocampus, and undetectable elsewhere. In the fetal brain, expressed in the germinal neuroepithelium and cortical plate regions.,

matters needing attention

Avoid repeated freezing and thawing!

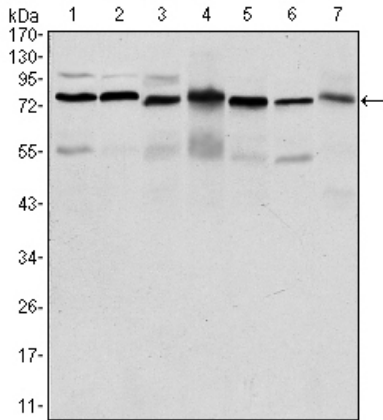
Usage suggestions

This product can be used in immunological reaction related experiments. For more information, please consult technical personnel.

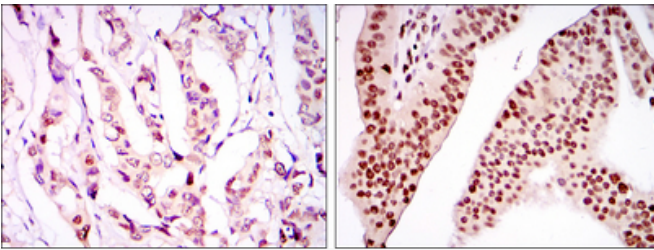
Nanjing BYabscience technology Co.,Ltd



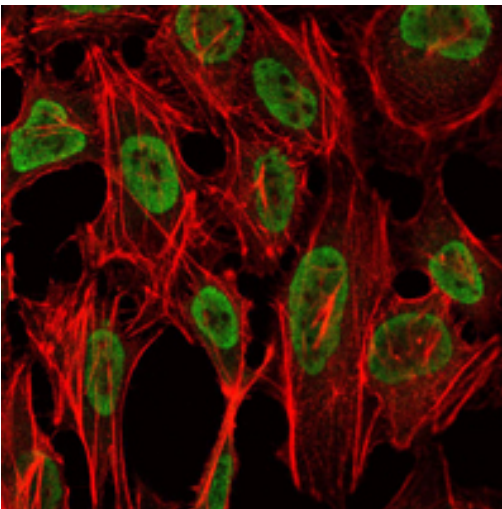
Products Images



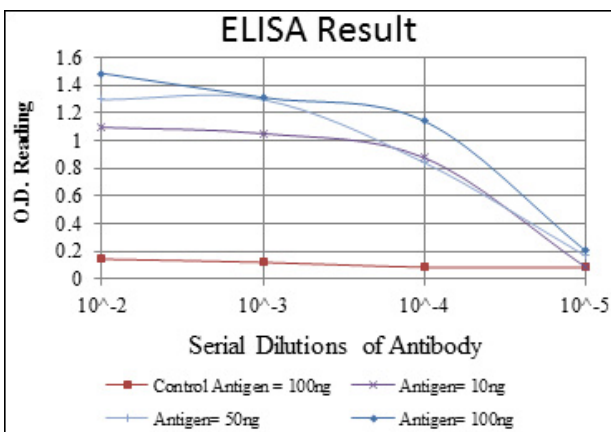
Western Blot analysis using LEDGF Monoclonal Antibody against HepG2 (1), Jurkat (2), K562 (3), Cos7 (4), PC-12 (5), HeLa (6), and NIH/3T3 (7) cell lysate.



Immunohistochemistry analysis of paraffin-embedded breast cancer tissues (left) and ovarian cancer tissues (right) with DAB staining using LEDGF Monoclonal Antibody.



Immunofluorescence analysis of NIH/3T3 cells using LEDGF Monoclonal Antibody (green). Red: Actin filaments have been labeled with Alexa Fluor-555 phalloidin.



Nanjing BYabscience technology Co.,Ltd



Nanjing BYabscience technology Co.,Ltd

网址: www.njbybio.com

官方热线: 025-5229-8998

监督电话: 15950492658