



# FoxP3 Monoclonal Antibody

<b>Catalog No</b>	BYab-00981
<b>Isotype</b>	IgG
<b>Reactivity</b>	Human;Mouse
<b>Applications</b>	WB;IHC;IF;ELISA
<b>Gene Name</b>	FOXP3
<b>Protein Name</b>	Forkhead box protein P3
<b>Immunogen</b>	Purified recombinant fragment of human FoxP3 expressed in E. Coli.
<b>Specificity</b>	FoxP3 Monoclonal Antibody detects endogenous levels of FoxP3 protein.
<b>Formulation</b>	Purified antibody in PBS containing 0.03% sodium azide.
<b>Source</b>	Monoclonal, Mouse
<b>Purification</b>	Affinity purification
<b>Dilution</b>	Western Blot: 1/500 - 1/2000. Immunohistochemistry: 1/200 - 1/1000. Immunofluorescence: 1/200 - 1/1000. ELISA: 1/10000. Not yet tested in other applications.
<b>Concentration</b>	1 mg/ml
<b>Purity</b>	≥90%
<b>Storage Stability</b>	-20°C/1 year
<b>Synonyms</b>	FOXP3; IPEX; JM2; Forkhead box protein P3; Scurfin
<b>Observed Band</b>	
<b>Cell Pathway</b>	Nucleus . Cytoplasm . Predominantly expressed in the cytoplasm in activated conventional T-cells whereas predominantly expressed in the nucleus in regulatory T-cells (Treg). The 41 kDa form derived by proteolytic processing is found exclusively in the chromatin fraction of activated Treg cells (By similarity).
<b>Tissue Specificity</b>	
<b>Function</b>	disease:Defects in FOXP3 are the cause of immunodeficiency polyendocrinopathy, enteropathy, X-linked syndrome (IPEX) [MIM:304790]; also known as X-linked autoimmunity-immunodeficiency syndrome. IPEX is characterized by neonatal onset insulin-dependent diabetes mellitus, infections, secretory diarrhea, thrombocytopenia, anemia and eczema. It is usually lethal in infancy.,function:Probable transcription factor. Plays a critical role in the control of immune response.,online information:FOXP3 entry,online information:FOXP3 mutation db,similarity:Contains 1 C2H2-type zinc finger.,similarity:Contains 1 fork-head DNA-binding domain.,

**Nanjing BYabscience technology Co.,Ltd**



**Background**

The protein encoded by this gene is a member of the forkhead/winged-helix family of transcriptional regulators. Defects in this gene are the cause of immunodeficiency polyendocrinopathy, enteropathy, X-linked syndrome (IPEX), also known as X-linked autoimmunity-immunodeficiency syndrome. Alternatively spliced transcript variants encoding different isoforms have been identified. [provided by RefSeq, Jul 2008],

**matters needing attention**

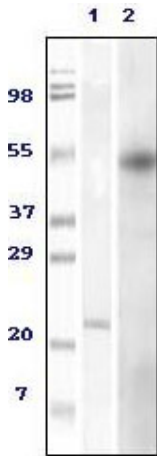
Avoid repeated freezing and thawing!

**Usage suggestions**

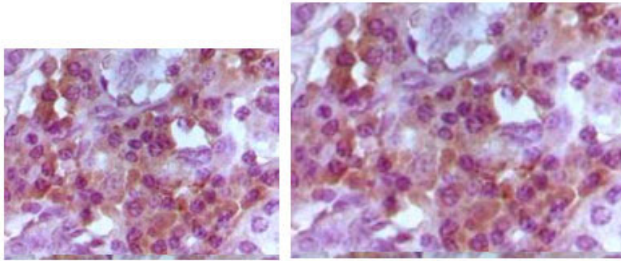
This product can be used in immunological reaction related experiments. For more information, please consult technical personnel.



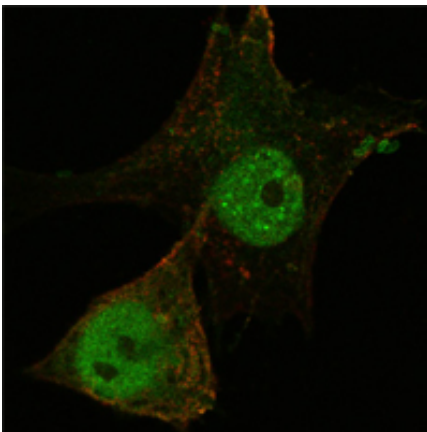
## Products Images



Western Blot analysis using FoxP3 Monoclonal Antibody against truncated Foxp3 recombinant (1) and HEK293 cell lysate (2).



Immunohistochemistry analysis of paraffin-embedded human lymphocyte tissue, showing cytoplasmic and nuclear localization with DAB staining using FoxP3 Monoclonal Antibody.



Confocal immunofluorescence analysis of PANC-1 cells using FoxP3 Monoclonal Antibody (green). Red: Actin filaments have been labeled with Alexa Fluor-555 phalloidin.