



Stat2 (Acetyl Lys384) rabbit pAb

Catalog No	BYab-00924
Isotype	IgG
Reactivity	Human;Rat
Applications	WB;ELISA;IHC
Gene Name	STAT2
Protein Name	Stat2 (Acetyl Lys384)
Immunogen	Synthesized peptide derived from human Stat2 (Acetyl Lys384)
Specificity	This antibody detects endogenous levels of Human,Rat Stat2 (Acetyl Lys384)
Formulation	Liquid in PBS containing 50% glycerol, 0.5% BSA and 0.02% sodium azide.
Source	Polyclonal, Rabbit,IgG
Purification	The antibody was affinity-purified from rabbit serum by affinity-chromatography using specific immunogen.
Dilution	WB 1:500-2000;IHC-p 1:50-300; ELISA 2000-20000
Concentration	1 mg/ml
Purity	≥90%
Storage Stability	-20°C/1 year
Synonyms	Signal transducer and activator of transcription 2 (p113)
Observed Band	73kD
Cell Pathway	Cytoplasm . Nucleus . Translocated into the nucleus upon activation by IFN-alpha/beta. .
Tissue Specificity	
Function	transcription, regulation of transcription, DNA-dependent, regulation of transcription from RNA polymerase II promoter,intracellular signaling cascade, protein kinase cascade, JAK-STAT cascade, response to virus, regulation of transcription, regulation of RNA metabolic process,
Background	function:Signal transducer and activator of transcription that mediates signaling by type I IFNs (IFN-alpha and IFN-beta). Following type I IFN binding to cell surface receptors, Jak kinases (TYK2 and JAK1) are activated, leading to tyrosine phosphorylation of STAT1 and STAT2. The phosphorylated STATs dimerize, associate with ISGF3G/IRF-9 to form a complex termed ISGF3 transcription factor, that enters the nucleus. ISGF3 binds to the IFN stimulated response element (ISRE) to activate the transcription of interferon stimulated genes, which

Nanjing BYabscience technology Co.,Ltd



drive the cell in an antiviral state.,PTM:Tyrosine phosphorylated in response to IFN-alpha.,similarity:Belongs to the transcription factor STAT family.,similarity:Contains 1 SH2 domain.,subcellular location:Translocated into the nucleus upon activation by IFN-alpha/beta.,subunit:Interacts with ISGF3G/IRF-9 in the cytoplasm. Heterodimer with STAT1 upon IFN-alpha/beta induced phosphorylation. Interacts with CRSP2 and CRSP6. Interacts with Simian virus 5 protein V and rabies virus phosphoprotein.,

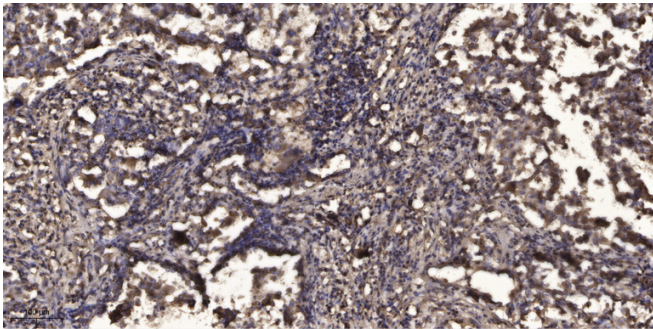
matters needing attention

Avoid repeated freezing and thawing!

Usage suggestions

This product can be used in immunological reaction related experiments. For more information, please consult technical personnel.

Products Images



Immunohistochemical analysis of paraffin-embedded human Squamous cell carcinoma of lung. 1, Antibody was diluted at 1:200(4° overnight). 2, Tris-EDTA,pH9.0 was used for antigen retrieval. 3,Secondary antibody was diluted at 1:200(room temperature, 45min).