



Sp1 (Acetyl Lys703) rabbit pAb

Catalog No	BYab-00921
Isotype	IgG
Reactivity	Human;Mouse;Rat
Applications	WB;IHC
Gene Name	SP1 TSFP1
Protein Name	Sp1 (Acetyl Lys703)
Immunogen	Synthesized peptide derived from human Sp1 (Acetyl Lys703)
Specificity	This antibody detects endogenous levels of Human,Mouse,Rat Sp1 (Acetyl Lys703)
Formulation	Liquid in PBS containing 50% glycerol, 0.5% BSA and 0.02% sodium azide.
Source	Polyclonal, Rabbit,IgG
Purification	The antibody was affinity-purified from rabbit serum by affinity-chromatography using specific immunogen.
Dilution	WB 1:500-2000;IHC-p 1:50-300
Concentration	1 mg/ml
Purity	≥90%
Storage Stability	-20°C/1 year
Synonyms	Transcription factor Sp1
Observed Band	90kD
Cell Pathway	Nucleus. Cytoplasm. Nuclear location is governed by glycosylated/phosphorylated states. Insulin promotes nuclear location, while glucagon favors cytoplasmic location.
Tissue Specificity	Up-regulated in adenocarcinomas of the stomach (at protein level). Isoform 3 is ubiquitously expressed at low levels.
Function	skeletal system development, ossification, eye development, in utero embryonic development, blastocyst development, blastocyst formation, trophectodermal cell differentiation, liver development, placenta development,embryonic placenta development, immune system development, transcription, regulation of transcription, DNA-dependent, regulation of transcription from RNA polymerase II promoter, regulation of transcription from RNA polymerase II promoter, global, sensory organ development, female pregnancy, embryonic development ending in birth or egg hatching, positive regulation of biosynthetic process, positive regulation of macromolecule biosynthetic process, positive regulation of macromolecule metabolic process, positive regulation of gene

Nanjing BYabscience technology Co.,Ltd



expression, hemopoiesis, myeloid cell differentiation, erythrocyte differentiation, megakaryocyte differentiation, respiratory tube development, lung

Background

function: Binds to GC box promoters elements and selectively activates mRNA synthesis from genes that contain functional recognition sites. Can interact with G/C-rich motifs from serotonin receptor promoter., PTM: O-glycosylated; contains N-acetylglucosamine side chains., similarity: Belongs to the Sp1 C2H2-type zinc-finger protein family., similarity: Contains 3 C2H2-type zinc fingers., subunit: Interacts with ATF7IP, ATF7IP2, POGZ, HCFC1, AATF and PHC2. Interacts with varicella-zoster virus IE62 protein and HIV-1 Vpr. Interacts with SV40 VP2/3 proteins. Interacts with SV40 major capsid protein VP1; this interaction leads to a cooperativity between the two proteins in DNA binding.,

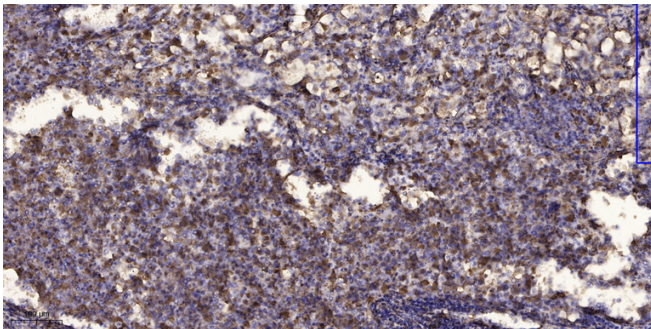
matters needing attention

Avoid repeated freezing and thawing!

Usage suggestions

This product can be used in immunological reaction related experiments. For more information, please consult technical personnel.

Products Images



Immunohistochemical analysis of paraffin-embedded human Squamous cell carcinoma of lung. 1, Antibody was diluted at 1:200(4° overnight). 2, Tris-EDTA, pH9.0 was used for antigen retrieval. 3, Secondary antibody was diluted at 1:200(room temperature, 45min).