



# AP-1 (Acetyl Lys271) Polyclonal Antibody

<b>Catalog No</b>	BYab-00862
<b>Isotype</b>	IgG
<b>Reactivity</b>	Human;Mouse;Rat
<b>Applications</b>	WB;ELISA
<b>Gene Name</b>	JUN
<b>Protein Name</b>	Transcription factor AP-1;jun;c-jun; AP-1
<b>Immunogen</b>	Synthesized acetyl-peptide derived from the Internal region of human AP-1 around the acetylation site of K271.
<b>Specificity</b>	Acetyl-AP-1 (K271) Polyclonal Antibody detects endogenous levels of AP-1 protein only when acetylation at K271.
<b>Formulation</b>	Liquid in PBS containing 50% glycerol, 0.5% BSA and 0.02% sodium azide.
<b>Source</b>	Polyclonal, Rabbit,IgG
<b>Purification</b>	The antibody was affinity-purified from rabbit antiserum by affinity-chromatography using epitope-specific immunogen.
<b>Dilution</b>	Western Blot: 1/500 - 1/2000. ELISA: 1/10000. Not yet tested in other applications.
<b>Concentration</b>	1 mg/ml
<b>Purity</b>	≥90%
<b>Storage Stability</b>	-20°C/1 year
<b>Synonyms</b>	JUN; Transcription factor AP-1; Activator protein 1; AP1; Proto-oncogene c-Jun; V-jun avian sarcoma virus 17 oncogene homolog; p39
<b>Observed Band</b>	39-42kD
<b>Cell Pathway</b>	Nucleus.
<b>Tissue Specificity</b>	Expressed in the developing and adult prostate and prostate cancer cells.
<b>Function</b>	function:Transcription factor that recognizes and binds to the enhancer heptamer motif 5'-TGA[CG]TCA-3'.,PTM:Phosphorylation enhances the transcriptional activity. Phosphorylated by PRKDC.,similarity:Belongs to the bZIP family.,similarity:Belongs to the bZIP family. Jun subfamily.,similarity:Contains 1 bZIP domain.,subunit:Heterodimer with either FOS or BATF3. Interacts with HIVEP3 (By similarity). Interacts with SMAD3/SMAD4 heterodimers. Interacts with MYBBP1A, SPIB and TCF20. Interacts with COPS5; indirectly leading to its phosphorylation. Interacts with DSIPI; this interaction inhibits the binding of active AP1 to its target DNA.,

Nanjing BYabscience technology Co.,Ltd



### Background

This gene is the putative transforming gene of avian sarcoma virus 17. It encodes a protein which is highly similar to the viral protein, and which interacts directly with specific target DNA sequences to regulate gene expression. This gene is intronless and is mapped to 1p32-p31, a chromosomal region involved in both translocations and deletions in human malignancies. [provided by RefSeq, Jul 2008],

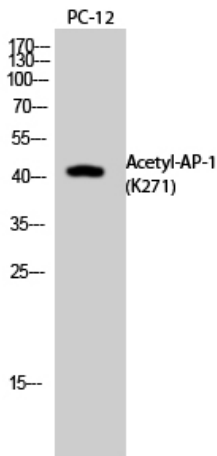
### matters needing attention

Avoid repeated freezing and thawing!

### Usage suggestions

This product can be used in immunological reaction related experiments. For more information, please consult technical personnel.

## Products Images



Western Blot analysis of PC12 cells using Acetyl-AP-1 (K271) Polyclonal Antibody. Secondary antibody(catalog#:RS0002) was diluted at 1:20000