



CRBP II Polyclonal Antibody

Catalog No	BYab-00768
Isotype	IgG
Reactivity	Human;Mouse;Rat
Applications	WB;ELISA
Gene Name	RBP2
Protein Name	Retinol-binding protein 2
Immunogen	The antiserum was produced against synthesized peptide derived from the Internal region of human RBP2. AA range:71-120
Specificity	CRBP II Polyclonal Antibody detects endogenous levels of CRBP II protein.
Formulation	Liquid in PBS containing 50% glycerol, 0.5% BSA and 0.02% sodium azide.
Source	Polyclonal, Rabbit,IgG
Purification	The antibody was affinity-purified from rabbit antiserum by affinity-chromatography using epitope-specific immunogen.
Dilution	Western Blot: 1/500 - 1/2000. ELISA: 1/20000. Not yet tested in other applications.
Concentration	1 mg/ml
Purity	≥90%
Storage Stability	-20°C/1 year
Synonyms	RBP2; CRBP2; Retinol-binding protein 2; Cellular retinol-binding protein II; CRBP-II
Observed Band	15kD
Cell Pathway	Cytoplasm.
Tissue Specificity	Higher expression in adult small intestine and to a much lesser extent in fetal kidney.
Function	domain:Forms a beta-barrel structure that accommodates hydrophobic ligands in its interior.,function:Intracellular transport of retinol.,similarity:Belongs to the calycin superfamily. Fatty-acid binding protein (FABP) family.,tissue specificity:Higher expression in adult small intestine and to a much lesser extent in fetal kidney.,
Background	retinol binding protein 2(RBP2) Homo sapiens This gene encodes an abundant protein present in the small intestinal epithelium. It is thought to participate in the uptake and/or intracellular metabolism of vitamin A. Vitamin A is a fat-soluble vitamin necessary for growth, reproduction, differentiation of

Nanjing BYabscience technology Co.,Ltd



epithelial tissues, and vision. This protein may also modulate the supply of retinoic acid to the nuclei of endometrial cells during the menstrual cycle. [provided by RefSeq, Aug 2015],

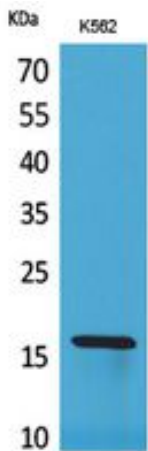
matters needing attention

Avoid repeated freezing and thawing!

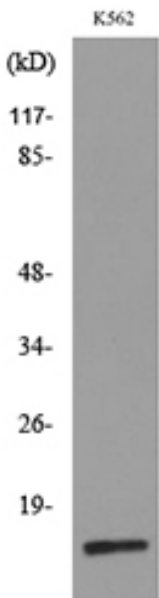
Usage suggestions

This product can be used in immunological reaction related experiments. For more information, please consult technical personnel.

Products Images



Western Blot analysis of K562 cells using CRBP II Polyclonal Antibody. Secondary antibody(catalog#:RS0002) was diluted at 1:20000



Western blot analysis of lysate from K562 cells, using RBP2 Antibody.