



ApoL6 Polyclonal Antibody

Catalog No	BYab-00758
Isotype	IgG
Reactivity	Human;Rat;Mouse;
Applications	WB;ELISA
Gene Name	APOL6
Protein Name	Apolipoprotein L6
Immunogen	Synthesized peptide derived from ApoL6 . at AA range: 240-320
Specificity	ApoL6 Polyclonal Antibody detects endogenous levels of ApoL6 protein.
Formulation	Liquid in PBS containing 50% glycerol, 0.5% BSA and 0.02% sodium azide.
Source	Polyclonal, Rabbit,IgG
Purification	The antibody was affinity-purified from rabbit antiserum by affinity-chromatography using epitope-specific immunogen.
Dilution	Western Blot: 1/500 - 1/2000. ELISA: 1/10000. Not yet tested in other applications.
Concentration	1 mg/ml
Purity	≥90%
Storage Stability	-20°C/1 year
Synonyms	APOL6; Apolipoprotein L6; Apolipoprotein L-VI; ApoL-VI
Observed Band	38kD
Cell Pathway	Cytoplasm .
Tissue Specificity	Widely expressed; highly expressed in the uterus, fetal brain and spinal cord, also detected in heart, liver, lung, colon, spleen, thymus, prostate, placenta, adrenal gland, salivary and mammary gland.
Function	function:May affect the movement of lipids in the cytoplasm or allow the binding of lipids to organelles.,similarity:Belongs to the apolipoprotein L family.,tissue specificity:Widely expressed; highly expressed in the uterus, fetal brain and spinal cord, also detected in heart, liver, lung, colon, spleen, thymus, prostate, placenta, adrenal gland, salivary and mammary gland.,
Background	This gene is a member of the apolipoprotein L gene family. The encoded protein is found in the cytoplasm, where it may affect the movement of lipids or allow the binding of lipids to organelles. [provided by RefSeq, Jul 2008],

Nanjing BYabscience technology Co.,Ltd



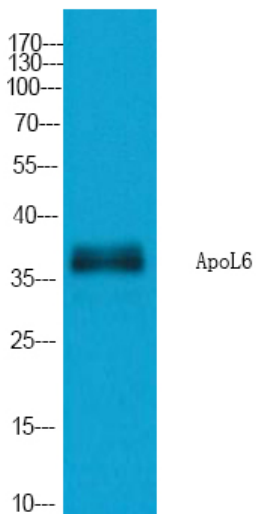
matters needing attention

Avoid repeated freezing and thawing!

Usage suggestions

This product can be used in immunological reaction related experiments. For more information, please consult technical personnel.

Products Images



Western Blot analysis of extracts from K562 cells, using ApoL6 Polyclonal Antibody. Secondary antibody(catalog#:RS0002) was diluted at 1:20000