



ENT1 Polyclonal Antibody

Catalog No	BYab-00757
Isotype	IgG
Reactivity	Human;Mouse;Rat
Applications	WB;ELISA
Gene Name	SLC29A1
Protein Name	Equilibrative nucleoside transporter 1
Immunogen	The antiserum was produced against synthesized peptide derived from human ENT1. AA range:15-64
Specificity	ENT1 Polyclonal Antibody detects endogenous levels of ENT1 protein.
Formulation	Liquid in PBS containing 50% glycerol, 0.5% BSA and 0.02% sodium azide.
Source	Polyclonal, Rabbit,IgG
Purification	The antibody was affinity-purified from rabbit antiserum by affinity-chromatography using epitope-specific immunogen.
Dilution	Western Blot: 1/500 - 1/2000. ELISA: 1/20000. Not yet tested in other applications.
Concentration	1 mg/ml
Purity	≥90%
Storage Stability	-20°C/1 year
Synonyms	SLC29A1; ENT1; Equilibrative nucleoside transporter 1; Equilibrative nitrobenzylmercaptapurine riboside-sensitive nucleoside transporter;Equilibrative NBMPR-sensitive nucleoside transporter; Nucleoside transporter, es-type; Solute carrier family 29 member 1
Observed Band	55kD
Cell Pathway	Basolateral cell membrane; Multi-pass membrane protein. Apical cell membrane; Multi-pass membrane protein. Cell membrane; Multi-pass membrane protein. Predominantly localized in the basolateral membrane in polarized MDCK cells.
Tissue Specificity	Detected in erythrocytes (at protein level). Expressed in heart, brain, mammary gland, erythrocytes and placenta, and also in fetal liver and spleen.
Function	function:Mediates both influx and efflux of nucleosides across the membrane (equilibrative transporter). It is sensitive (ES) to low concentrations of the inhibitor nitrobenzylmercaptapurine riboside (NBMPR) and is sodium-independent. It has a higher affinity for adenosine. Inhibited by dipyridamole and dilazep (anticancer chemotherapeutics drugs).,PTM:Glycosylated.,similarity:Belongs to the SLC29A transporter family.,tissue specificity:Expressed in heart, brain, mammary gland,

Nanjing BYabscience technology Co.,Ltd



erythrocytes and placenta, and also in fetal liver and spleen.,

Background

This gene is a member of the equilibrative nucleoside transporter family. The gene encodes a transmembrane glycoprotein that localizes to the plasma and mitochondrial membranes and mediates the cellular uptake of nucleosides from the surrounding medium. The protein is categorized as an equilibrative (as opposed to concentrative) transporter that is sensitive to inhibition by nitrobenzylthioinosine (NBMPR). Nucleoside transporters are required for nucleotide synthesis in cells that lack de novo nucleoside synthesis pathways, and are also necessary for the uptake of cytotoxic nucleosides used for cancer and viral chemotherapies. Multiple alternatively spliced variants, encoding the same protein, have been found for this gene. [provided by RefSeq, Jul 2008],

matters needing attention

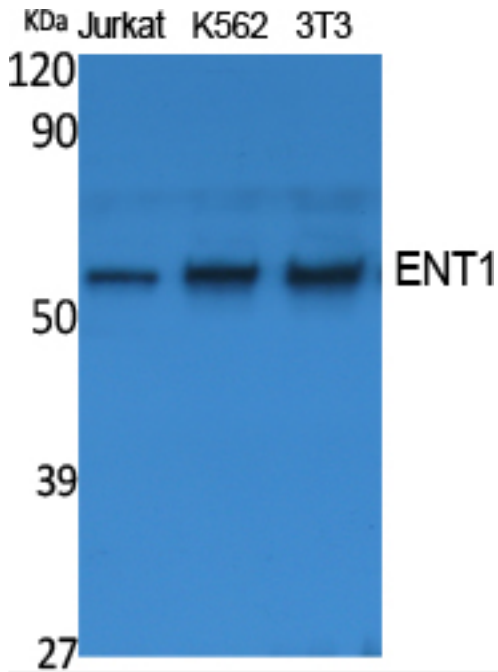
Avoid repeated freezing and thawing!

Usage suggestions

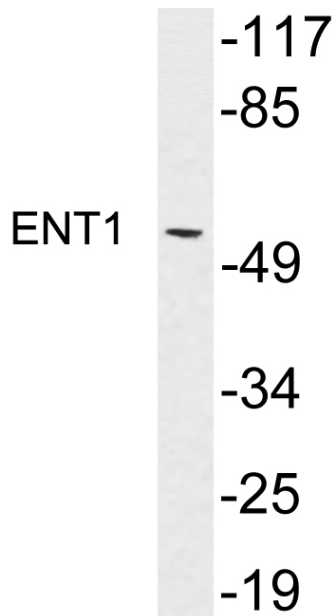
This product can be used in immunological reaction related experiments. For more information, please consult technical personnel.



Products Images



Western Blot analysis of extracts from Jurkat, K562, NIH-3T3 cells, using ENT1 Polyclonal Antibody. Antibody was diluted at 1:2000. Secondary antibody(catalog#:RS0002) was diluted at 1:20000



Western blot analysis of lysates from MDA-MB-435 cells, using ENT1 antibody.