



# Synaptotagmin XVI Polyclonal Antibody

<b>Catalog No</b>	BYab-00746
<b>Isotype</b>	IgG
<b>Reactivity</b>	Human;Rat;Mouse;
<b>Applications</b>	WB;ELISA
<b>Gene Name</b>	SYT16
<b>Protein Name</b>	Synaptotagmin-16
<b>Immunogen</b>	The antiserum was produced against synthesized peptide derived from human SYT16. AA range:231-280
<b>Specificity</b>	Synaptotagmin XVI Polyclonal Antibody detects endogenous levels of Synaptotagmin XVI protein.
<b>Formulation</b>	Liquid in PBS containing 50% glycerol, 0.5% BSA and 0.02% sodium azide.
<b>Source</b>	Polyclonal, Rabbit,IgG
<b>Purification</b>	The antibody was affinity-purified from rabbit antiserum by affinity-chromatography using epitope-specific immunogen.
<b>Dilution</b>	Western Blot: 1/500 - 1/2000. ELISA: 1/40000. Not yet tested in other applications.
<b>Concentration</b>	1 mg/ml
<b>Purity</b>	≥90%
<b>Storage Stability</b>	-20°C/1 year
<b>Synonyms</b>	SYT16; STREP14; SYT14L; SYT14R; Synaptotagmin-16; Chr14Syt; Synaptotagmin 14-like protein; Synaptotagmin XIV-related protein
<b>Observed Band</b>	72kD
<b>Cell Pathway</b>	plasma membrane,
<b>Tissue Specificity</b>	Expressed in brain.
<b>Function</b>	function:May be involved in the trafficking and exocytosis of secretory vesicles in non-neuronal tissues. Is Ca(2+)-independent.,sequence caution:Translated as Gln.,similarity:Belongs to the synaptotagmin family.,similarity:Contains 2 C2 domains.,subunit:Homodimer. Can also form heterodimers.,tissue specificity:Expressed in brain.,
<b>Background</b>	function:May be involved in the trafficking and exocytosis of secretory vesicles in non-neuronal tissues. Is Ca(2+)-independent.,sequence caution:Translated as Gln.,similarity:Belongs to the synaptotagmin family.,similarity:Contains 2 C2 domains.,subunit:Homodimer. Can also form heterodimers.,tissue

Nanjing BYabscience technology Co.,Ltd



specificity:Expressed in brain.,

**matters needing attention**

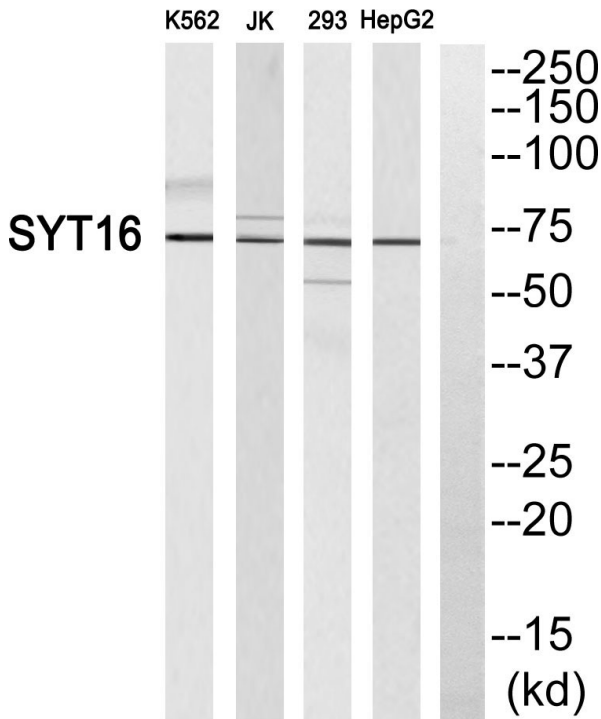
Avoid repeated freezing and thawing!

**Usage suggestions**

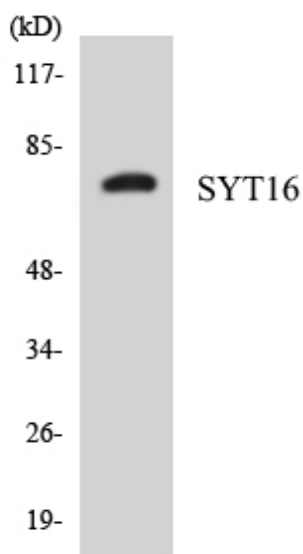
This product can be used in immunological reaction related experiments. For more information, please consult technical personnel.



## Products Images



Western blot analysis of SYT16 Antibody. The lane on the right is blocked with the SYT16 peptide.



Western blot analysis of the lysates from HepG2 cells using SYT16 antibody.

Nanjing BYabscience technology Co.,Ltd