



# Synaptotagmin XIII Polyclonal Antibody

<b>Catalog No</b>	BYab-00745
<b>Isotype</b>	IgG
<b>Reactivity</b>	Human;Mouse;Rat
<b>Applications</b>	WB;ELISA
<b>Gene Name</b>	SYT13
<b>Protein Name</b>	Synaptotagmin-13
<b>Immunogen</b>	The antiserum was produced against synthesized peptide derived from human SYT13. AA range:321-370
<b>Specificity</b>	Synaptotagmin XIII Polyclonal Antibody detects endogenous levels of Synaptotagmin XIII protein.
<b>Formulation</b>	Liquid in PBS containing 50% glycerol, 0.5% BSA and 0.02% sodium azide.
<b>Source</b>	Polyclonal, Rabbit,IgG
<b>Purification</b>	The antibody was affinity-purified from rabbit antiserum by affinity-chromatography using epitope-specific immunogen.
<b>Dilution</b>	Western Blot: 1/500 - 1/2000. ELISA: 1/10000. Not yet tested in other applications.
<b>Concentration</b>	1 mg/ml
<b>Purity</b>	≥90%
<b>Storage Stability</b>	-20°C/1 year
<b>Synonyms</b>	SYT13; KIAA1427; Synaptotagmin-13; Synaptotagmin XIII; SytXIII
<b>Observed Band</b>	48kD
<b>Cell Pathway</b>	Membrane ; Single-pass membrane protein .
<b>Tissue Specificity</b>	Expressed in brain, pancreas and kidney.
<b>Function</b>	domain:The first C2 domain/C2A does not mediate Ca(2+)-dependent phospholipid binding.,domain:The second C2 domain/C2B domain binds phospholipids regardless of whether calcium is present.,function:May be involved in transport vesicle docking to the plasma membrane.,similarity:Belongs to the synaptotagmin family.,similarity:Contains 2 C2 domains.,subunit:Interacts with NRXN1.,tissue specificity:Expressed in brain, pancreas and kidney.,
<b>Background</b>	synaptotagmin 13(SYT13) Homo sapiens This gene encodes a member of the large synaptotagmin protein family. Family members have an extracellular N-terminal transmembrane domain and a cytoplasmic C terminus with two tandem C2 domains (C2A and C2B). Synaptotogmin family members can form homo- and

Nanjing BYabscience technology Co.,Ltd



heteromeric complexes with each other. They also have different biochemical properties and developmental profiles, and patterns of tissue distribution. Synaptotagmins function as membrane traffickers in multicellular organisms. Two alternatively spliced transcript variants that encode different protein isoforms have been described for this gene. [provided by RefSeq, Oct 2011],

**matters needing attention**

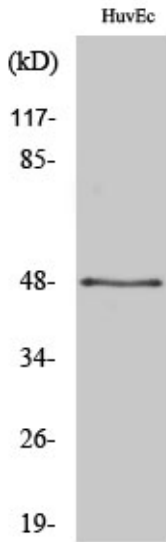
Avoid repeated freezing and thawing!

**Usage suggestions**

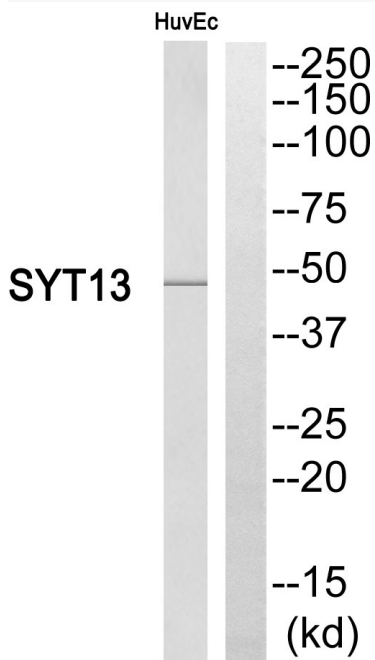
This product can be used in immunological reaction related experiments. For more information, please consult technical personnel.



## Products Images



Western Blot analysis of various cells using Synaptotagmin XIII Polyclonal Antibody



Western blot analysis of SYT13 Antibody. The lane on the right is blocked with the SYT13 peptide.