



Synaptotagmin X Polyclonal Antibody

Catalog No	BYab-00743
Isotype	IgG
Reactivity	Human;Mouse;Rat
Applications	WB;IHC
Gene Name	SYT10
Protein Name	Synaptotagmin-10
Immunogen	Synthesized peptide derived from Synaptotagmin X . at AA range: 380-460
Specificity	Synaptotagmin X Polyclonal Antibody detects endogenous levels of Synaptotagmin X protein.
Formulation	Liquid in PBS containing 50% glycerol, 0.5% BSA and 0.02% sodium azide.
Source	Polyclonal, Rabbit,IgG
Purification	The antibody was affinity-purified from rabbit antiserum by affinity-chromatography using epitope-specific immunogen.
Dilution	WB 1:500-2000;IHC-p 1:50-300
Concentration	1 mg/ml
Purity	≥90%
Storage Stability	-20°C/1 year
Synonyms	SYT10; Synaptotagmin-10; Synaptotagmin X; SytX
Observed Band	55kD
Cell Pathway	Cytoplasmic vesicle, secretory vesicle membrane ; Single-pass membrane protein . Localizes to neuronal vesicles containing IGF1 that are not enriched at synapses. Does not colocalize with synaptic vesicles or with the Golgi apparatus. .
Tissue Specificity	Expressed only in pancreas, lung and kidney.
Function	cofactor: Binds 3 calcium ions per subunit. The ions are bound to the C2 domains.,function: May be involved in Ca(2+)-dependent exocytosis of secretory vesicles through Ca(2+) and phospholipid binding to the C2 domain or may serve as Ca(2+) sensors in the process of vesicular trafficking and exocytosis.,similarity: Belongs to the synaptotagmin family.,similarity: Contains 2 C2 domains.,subunit: Homodimer. Can also form heterodimers.,tissue specificity: Expressed only in pancreas, lung and kidney.,
Background	cofactor: Binds 3 calcium ions per subunit. The ions are bound to the C2 domains.,function: May be involved in Ca(2+)-dependent exocytosis of secretory vesicles through Ca(2+) and phospholipid binding to the C2 domain or may serve

Nanjing BYabscience technology Co.,Ltd



as Ca(2+) sensors in the process of vesicular trafficking and exocytosis.,similarity:Belongs to the synaptotagmin family.,similarity:Contains 2 C2 domains.,subunit:Homodimer. Can also form heterodimers.,tissue specificity:Expressed only in pancreas, lung and kidney.,

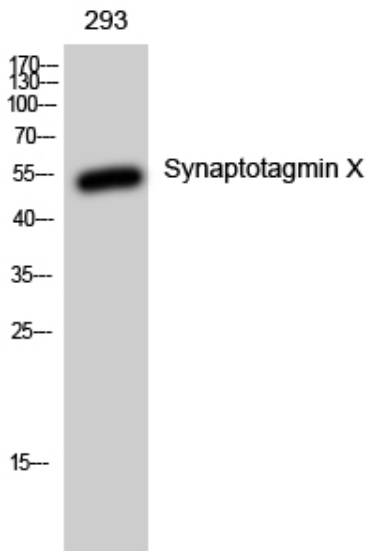
matters needing attention

Avoid repeated freezing and thawing!

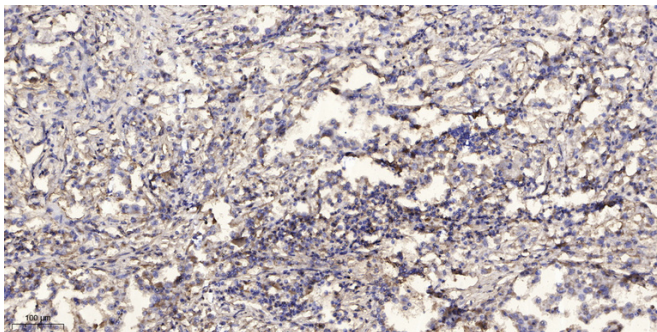
Usage suggestions

This product can be used in immunological reaction related experiments. For more information, please consult technical personnel.

Products Images



Western Blot analysis of 293 cells using Synaptotagmin X Polyclonal Antibody



Immunohistochemical analysis of paraffin-embedded human Squamous cell carcinoma of lung. 1, Antibody was diluted at 1:200(4° overnight). 2, Tris-EDTA,pH9.0 was used for antigen retrieval. 3,Secondary antibody was diluted at 1:200(room temperature, 45min).