



Stonin-1 Polyclonal Antibody

Catalog No	BYab-00738
Isotype	IgG
Reactivity	Human;Rat;Mouse;
Applications	WB;IHC;IF;ELISA
Gene Name	STON1
Protein Name	Stonin-1
Immunogen	The antiserum was produced against synthesized peptide derived from human STON1. AA range:686-735
Specificity	Stonin-1 Polyclonal Antibody detects endogenous levels of Stonin-1 protein.
Formulation	Liquid in PBS containing 50% glycerol, 0.5% BSA and 0.02% sodium azide.
Source	Polyclonal, Rabbit,IgG
Purification	The antibody was affinity-purified from rabbit antiserum by affinity-chromatography using epitope-specific immunogen.
Dilution	Western Blot: 1/500 - 1/2000. Immunohistochemistry: 1/100 - 1/300. Immunofluorescence: 1/200 - 1/1000. ELISA: 1/10000. Not yet tested in other applications.
Concentration	1 mg/ml
Purity	≥90%
Storage Stability	-20°C/1 year
Synonyms	STON1; SALF; SBLF; STN1; Stonin-1; Stoned B-like factor
Observed Band	83kD
Cell Pathway	Cytoplasm . Membrane . Some fraction is membrane-associated.
Tissue Specificity	Ubiquitous.
Function	caution:The sequence shown here is derived from an Ensembl automatic analysis pipeline and should be considered as preliminary data.,function:May be involved in the endocytic machinery.,function:May function as a testis specific transcription factor. Binds DNA in conjunction with GTF2A2 and TBP (the TATA-binding protein) and together with GTF2A2, allows mRNA transcription.,miscellaneous:In contrast to other members of the family, it does not contain NPF (Asn-Pro-Phe) sites and thereby does not interact with EPS15, EPS15R and ITSN1.,sequence caution:Chimeric cDNA. The biological existence and relevance of this product of both SALF (AC Q9Y6Q2) and GTF2A1LF genes, creating a chimeric protein of 1182 residues is uncertain.,sequence caution:Chimeric cDNA. The biological

Nanjing BYabscience technology Co.,Ltd



existence and relevance of this product of both SALF and GTF2A1LF (AC Q9UNN4) genes, which codes for a chimeric protein of 1

Background

stonin 1(STON1) Homo sapiens Endocytosis of cell surface proteins is mediated by a complex molecular machinery that assembles on the inner surface of the plasma membrane. This gene encodes one of two human homologs of the Drosophila melanogaster stoned B protein. This protein is related to components of the endocytic machinery and exhibits a modular structure consisting of an N-terminal proline-rich domain, a central region of homology specific to the human stoned B-like proteins, and a C-terminal region homologous to the mu subunits of adaptor protein (AP) complexes. Read-through transcription of this gene into the neighboring downstream gene, which encodes TFIIA-alpha/beta-like factor, generates a transcript (SALF), which encodes a fusion protein comprised of sequence sharing identity with each individual gene product. Alternative splicing results in multiple transcript variants. [provided by RefSeq, Oct 2010],

matters needing attention

Avoid repeated freezing and thawing!

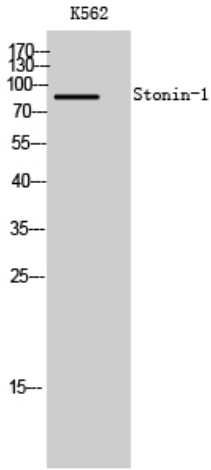
Usage suggestions

This product can be used in immunological reaction related experiments. For more information, please consult technical personnel.

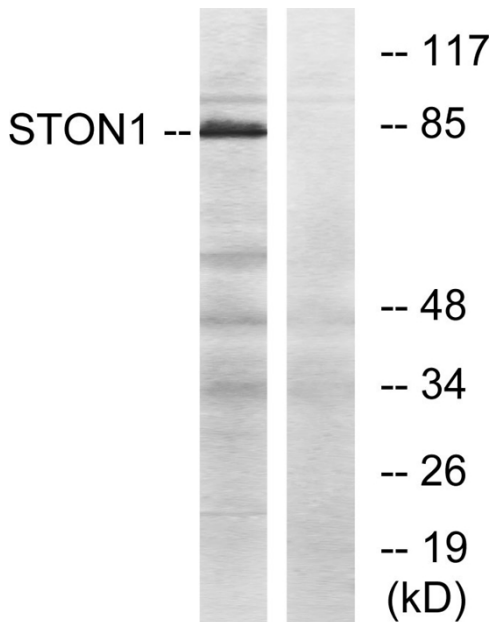
Nanjing BYabscience technology Co.,Ltd



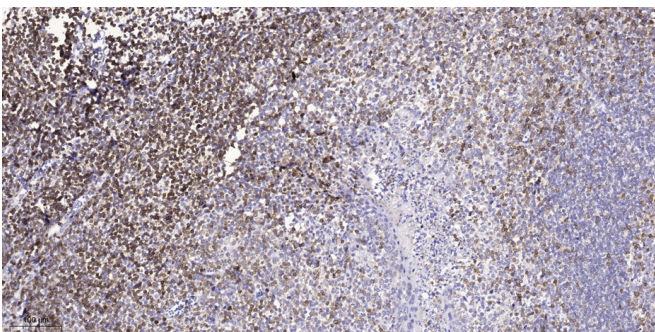
Products Images



Western Blot analysis of K562 cells using Stonin-1 Polyclonal Antibody



Western blot analysis of lysates from K562 cells, using STON1 Antibody. The lane on the right is blocked with the synthesized peptide.



Immunohistochemical analysis of paraffin-embedded human tonsil. 1, Tris-EDTA, pH9.0 was used for antigen retrieval. 2 Antibody was diluted at 1:200(4° overnight). 3, Secondary antibody was diluted at 1:200(room temperature, 45min).