



# StARD10 Polyclonal Antibody

<b>Catalog No</b>	BYab-00736
<b>Isotype</b>	IgG
<b>Reactivity</b>	Human;Mouse;Rat
<b>Applications</b>	WB;ELISA;IHC
<b>Gene Name</b>	STARD10
<b>Protein Name</b>	PCTP-like protein
<b>Immunogen</b>	Synthesized peptide derived from the Internal region of human StARD10.
<b>Specificity</b>	StARD10 Polyclonal Antibody detects endogenous levels of StARD10 protein.
<b>Formulation</b>	Liquid in PBS containing 50% glycerol, 0.5% BSA and 0.02% sodium azide.
<b>Source</b>	Polyclonal, Rabbit,IgG
<b>Purification</b>	The antibody was affinity-purified from rabbit antiserum by affinity-chromatography using epitope-specific immunogen.
<b>Dilution</b>	WB 1:500-2000;IHC-p 1:50-300; ELISA 2000-20000
<b>Concentration</b>	1 mg/ml
<b>Purity</b>	≥90%
<b>Storage Stability</b>	-20°C/1 year
<b>Synonyms</b>	STARD10; SDCCAG28; CGI-52; PCTP-like protein; PCTP-L; Antigen NY-CO-28; START domain-containing protein 10; StARD10; Serologically defined colon cancer antigen 28; StAR-related lipid transfer protein 10
<b>Observed Band</b>	33kD
<b>Cell Pathway</b>	Cell projection, cilium, flagellum . Cytoplasm . Membrane . In testis was predominantly detected at the flagella of elongated spermatids, with a strong signal also found at the tail of epididymal sperm (By similarity). Mainly cytosolic. .
<b>Tissue Specificity</b>	Colon carcinoma,Uterus,
<b>Function</b>	function:May play specific roles in sperm maturation or fertilization.,sequence caution:Various sequencing problems as well as a translation in a wrong frame.,similarity:Contains 1 START domain.,
<b>Background</b>	function:May play specific roles in sperm maturation or fertilization.,sequence caution:Various sequencing problems as well as a translation in a wrong frame.,similarity:Contains 1 START domain.,

Nanjing BYabscience technology Co.,Ltd



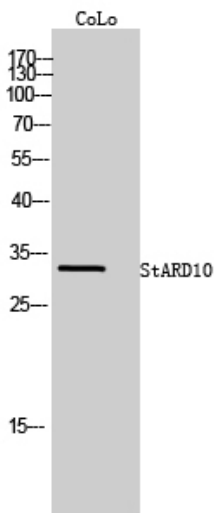
**matters needing attention**

Avoid repeated freezing and thawing!

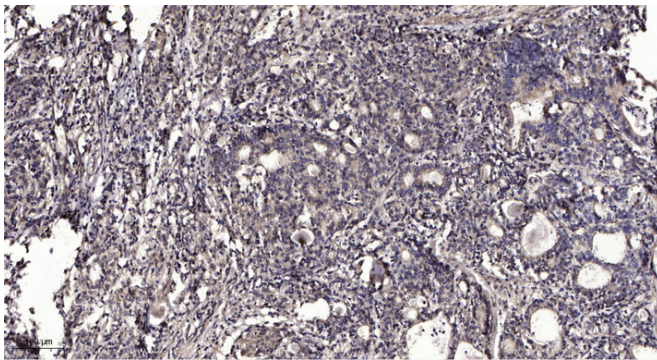
**Usage suggestions**

This product can be used in immunological reaction related experiments. For more information, please consult technical personnel.

**Products Images**



Western Blot analysis of CoLo cells using StARD10 Polyclonal Antibody



Immunohistochemical analysis of paraffin-embedded human Gastric adenocarcinoma. 1, Antibody was diluted at 1:200(4° overnight). 2, Tris-EDTA,pH9.0 was used for antigen retrieval. 3,Secondary antibody was diluted at 1:200(room temperature, 45min).