



SNAT2 Polyclonal Antibody

Catalog No	BYab-00731
Isotype	IgG
Reactivity	Human;Rat;Mouse;
Applications	WB;ELISA;IHC
Gene Name	SLC38A2
Protein Name	Sodium-coupled neutral amino acid transporter 2
Immunogen	The antiserum was produced against synthesized peptide derived from human SLC38A2. AA range:151-200
Specificity	SNAT2 Polyclonal Antibody detects endogenous levels of SNAT2 protein.
Formulation	Liquid in PBS containing 50% glycerol, 0.5% BSA and 0.02% sodium azide.
Source	Polyclonal, Rabbit,IgG
Purification	The antibody was affinity-purified from rabbit antiserum by affinity-chromatography using epitope-specific immunogen.
Dilution	WB 1:500-2000;IHC-p 1:50-300; ELISA 2000-20000
Concentration	1 mg/ml
Purity	≥90%
Storage Stability	-20°C/1 year
Synonyms	SLC38A2; ATA2; KIAA1382; SAT2; SNAT2; Sodium-coupled neutral amino acid transporter 2; Amino acid transporter A2; Protein 40-9-1; Solute carrier family 38 member 2; System A amino acid transporter 2; System A transporter 1; System N amino a
Observed Band	50kD
Cell Pathway	Cell membrane ; Multi-pass membrane protein . Insulin promotes recruitment to the plasma membrane from a pool localized in the trans-Golgi network or endosomes (By similarity). Enriched in the somatodendritic compartment of neurons, it is also detected at the axonal shaft but excluded from the nerve terminal. .
Tissue Specificity	Ubiquitously expressed. Widely expressed in the central nervous system with higher concentrations in caudal regions. Expressed by glutamatergic and GABAergic neurons together with astrocytes and other non-neuronal cells in the cerebral cortex (at protein level).
Function	enzyme regulation:Inhibited by N-methyl-D-glucamine and probably choline.,function:Functions as a sodium-dependent amino acid transporter.

Nanjing BYabscience technology Co.,Ltd



Mediates the saturable, pH-sensitive and electrogenic cotransport of neutral amino acids and sodium ions with a stoichiometry of 1:1. May function in the transport of amino acids at the blood-brain barrier and in the supply of maternal nutrients to the fetus through the placenta.,induction:Up-regulated upon hypertonic conditions and amino acid deprivation.,miscellaneous:Depletion of SCL38A2 by siRNA prevents the recovery of cells from hypertonic stress.,PTM:Polyubiquitination by NEDD4L regulates the degradation and the activity of SLC38A2.,similarity:Belongs to the amino acid/polyamine transporter 2 family.,subcellular location:Insulin promotes recruitment to the plasma membrane from a pool localized in the trans-Golgi network or endosomes (By similar

Background

enzyme regulation:Inhibited by N-methyl-D-glucamine and probably choline.,function:Functions as a sodium-dependent amino acid transporter. Mediates the saturable, pH-sensitive and electrogenic cotransport of neutral amino acids and sodium ions with a stoichiometry of 1:1. May function in the transport of amino acids at the blood-brain barrier and in the supply of maternal nutrients to the fetus through the placenta.,induction:Up-regulated upon hypertonic conditions and amino acid deprivation.,miscellaneous:Depletion of SCL38A2 by siRNA prevents the recovery of cells from hypertonic stress.,PTM:Polyubiquitination by NEDD4L regulates the degradation and the activity of SLC38A2.,similarity:Belongs to the amino acid/polyamine transporter 2 family.,subcellular location:Insulin promotes recruitment to the plasma membrane from a pool localized in the trans-Golgi network or endosomes (By similarity). Enriched in the somatodendritic compartment of neurons, it is also detected at the axonal shaft but excluded from the nerve terminal.,tissue specificity:Ubiquitously expressed. Widely expressed in the central nervous system with higher concentrations in caudal regions. Expressed by glutamatergic and GABAergic neurons together with astrocytes and other non-neuronal cells in the cerebral cortex (at protein level).

matters needing attention

Avoid repeated freezing and thawing!

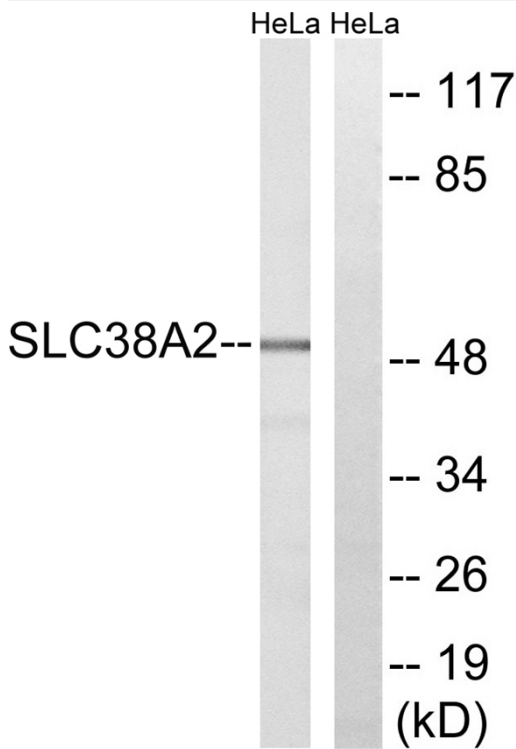
Usage suggestions

This product can be used in immunological reaction related experiments. For more information, please consult technical personnel.

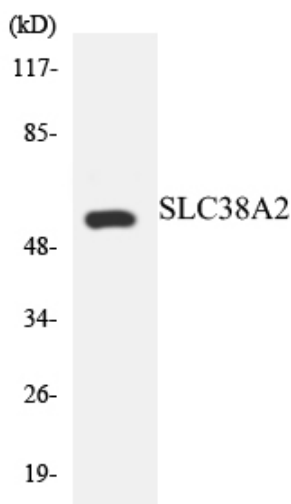
Nanjing BYabscience technology Co.,Ltd



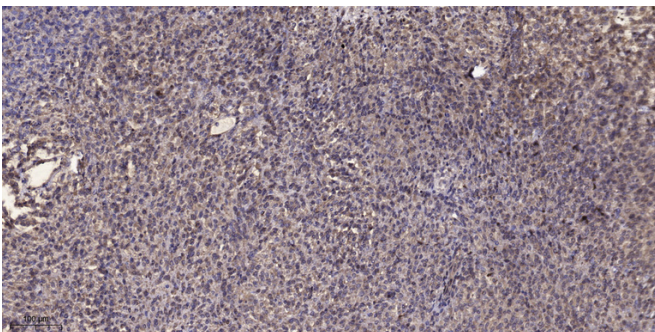
Products Images



Western blot analysis of lysates from HeLa cells, using SLC38A2 Antibody. The lane on the right is blocked with the synthesized peptide.



Western blot analysis of the lysates from HeLa cells using SLC38A2 antibody.



Immunohistochemical analysis of paraffin-embedded human Colon cancer. 1, Antibody was diluted at 1:200(4° overnight). 2, Tris-EDTA,pH9.0 was used for antigen retrieval. 3,Secondary antibody was diluted at 1:200(room temperature, 45min).

Nanjing BYabscience technology Co.,Ltd



Nanjing BYabscience technology Co.,Ltd

网址: www.njbybio.com

官方热线: 025-5229-8998

监督电话: 15950492658