



# SLC17A2 Polyclonal Antibody

<b>Catalog No</b>	BYab-00727
<b>Isotype</b>	IgG
<b>Reactivity</b>	Human;Mouse
<b>Applications</b>	WB;ELISA;IHC
<b>Gene Name</b>	SLC17A2
<b>Protein Name</b>	Sodium-dependent phosphate transport protein 3
<b>Immunogen</b>	The antiserum was produced against synthesized peptide derived from human SLC17A2. AA range:213-262
<b>Specificity</b>	SLC17A2 Polyclonal Antibody detects endogenous levels of SLC17A2 protein.
<b>Formulation</b>	Liquid in PBS containing 50% glycerol, 0.5% BSA and 0.02% sodium azide.
<b>Source</b>	Polyclonal, Rabbit,IgG
<b>Purification</b>	The antibody was affinity-purified from rabbit antiserum by affinity-chromatography using epitope-specific immunogen.
<b>Dilution</b>	WB 1:500-2000;IHC-p 1:50-300; ELISA 2000-20000
<b>Concentration</b>	1 mg/ml
<b>Purity</b>	≥90%
<b>Storage Stability</b>	-20°C/1 year
<b>Synonyms</b>	SLC17A2; NPT3; Sodium-dependent phosphate transport protein 3; Na(+)/PI cotransporter 3; Sodium/phosphate cotransporter 3; Solute carrier family 17 member 2
<b>Observed Band</b>	47kD
<b>Cell Pathway</b>	Membrane; Multi-pass membrane protein.
<b>Tissue Specificity</b>	Expressed in the small intestine, kidney, spleen and testis. Not detected in fetal brain, bone marrow, and mammary gland.
<b>Function</b>	function:May be involved in actively transporting phosphate into cells via Na(+) cotransport.,similarity:Belongs to the major facilitator superfamily. Sodium/anion cotransporter family.,tissue specificity:Expressed in the small intestine, kidney, spleen and testis. Not detected in fetal brain, bone marrow, and mammary gland.,
<b>Background</b>	function:May be involved in actively transporting phosphate into cells via Na(+) cotransport.,similarity:Belongs to the major facilitator superfamily. Sodium/anion cotransporter family.,tissue specificity:Expressed in the small intestine, kidney, spleen and testis. Not detected in fetal brain, bone marrow, and mammary gland.,

Nanjing BYabscience technology Co.,Ltd



**matters needing attention**

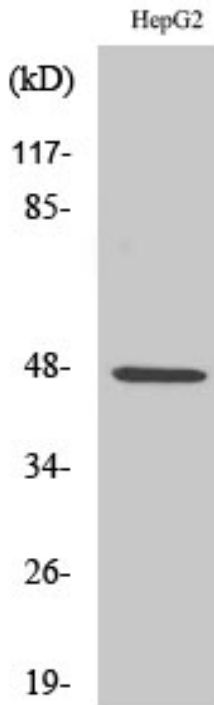
Avoid repeated freezing and thawing!

**Usage suggestions**

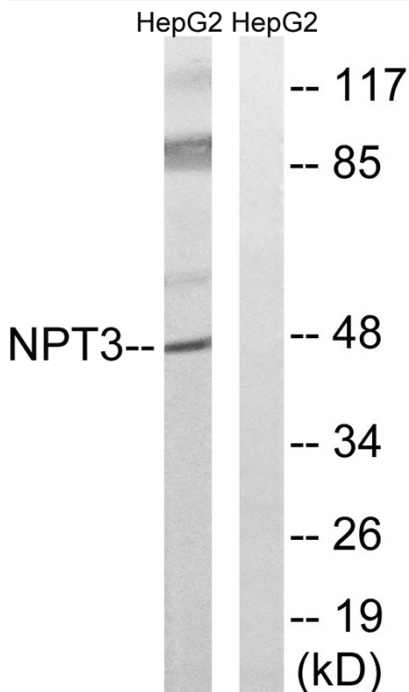
This product can be used in immunological reaction related experiments. For more information, please consult technical personnel.



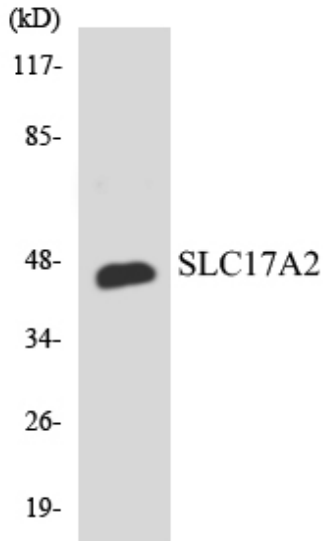
## Products Images



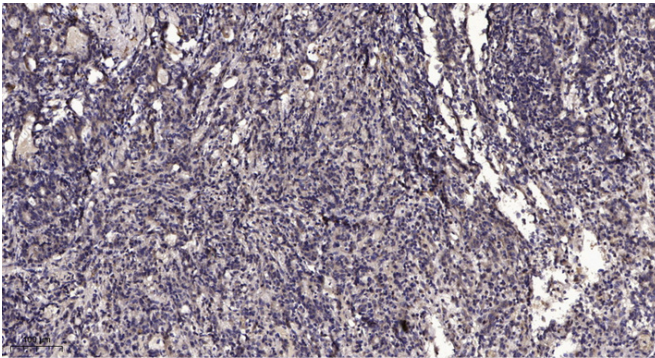
Western Blot analysis of various cells using SLC17A2 Polyclonal Antibody



Western blot analysis of lysates from HepG2 cells, using SLC17A2 Antibody. The lane on the right is blocked with the synthesized peptide.



Western blot analysis of the lysates from RAW264.7 cells using SLC17A2 antibody.



Immunohistochemical analysis of paraffin-embedded human Gastric adenocarcinoma. 1, Antibody was diluted at 1:200(4° overnight). 2, Tris-EDTA, pH9.0 was used for antigen retrieval. 3, Secondary antibody was diluted at 1:200(room temperature, 45min).