



SCAMP1 Polyclonal Antibody

Catalog No	BYab-00720
Isotype	IgG
Reactivity	Human;Mouse;Rat
Applications	WB;IHC
Gene Name	SCAMP1
Protein Name	Secretory carrier-associated membrane protein 1
Immunogen	The antiserum was produced against synthesized peptide derived from human SCAMP1. AA range:273-322
Specificity	SCAMP1 Polyclonal Antibody detects endogenous levels of SCAMP1 protein.
Formulation	Liquid in PBS containing 50% glycerol, 0.5% BSA and 0.02% sodium azide.
Source	Polyclonal, Rabbit,IgG
Purification	The antibody was affinity-purified from rabbit antiserum by affinity-chromatography using epitope-specific immunogen.
Dilution	WB 1:500-2000;IHC-p 1:50-300
Concentration	1 mg/ml
Purity	≥90%
Storage Stability	-20°C/1 year
Synonyms	SCAMP1; SCAMP; Secretory carrier-associated membrane protein 1; Secretory carrier membrane protein 1
Observed Band	32kD
Cell Pathway	Golgi apparatus, trans-Golgi network membrane ; Multi-pass membrane protein . Recycling endosome membrane ; Multi-pass membrane protein .
Tissue Specificity	Widely expressed, with highest expression in brain.
Function	function:Functions in post-Golgi recycling pathways. Acts as a recycling carrier to the cell surface.,similarity:Belongs to the SCAMP family.,subunit:Interacts with AP1GBP1 and ITSN1 (By similarity). Interacts with SLC9A7.,tissue specificity:Widely expressed, with highest expression in brain.,
Background	This gene product belongs to the SCAMP family of proteins, which are secretory carrier membrane proteins. They function as carriers to the cell surface in post-golgi recycling pathways. Different family members are highly related products of distinct genes, and are usually expressed together. These findings suggest that these protein family members may function at the same site during

Nanjing BYabscience technology Co.,Ltd



vesicular transport rather than in separate pathways. A pseudogene of this gene has been defined on chromosome 1. Alternative splicing results in multiple transcript variants. [provided by RefSeq, Mar 2014],

matters needing attention

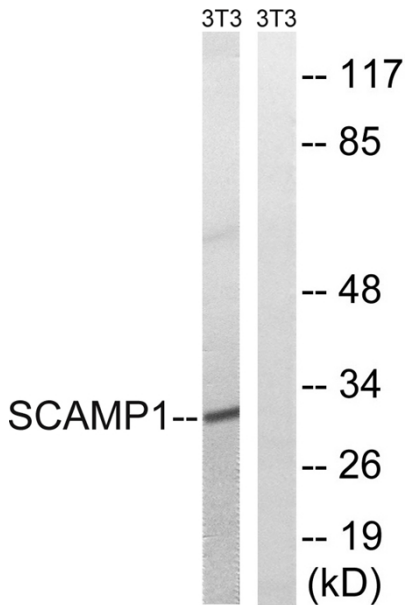
Avoid repeated freezing and thawing!

Usage suggestions

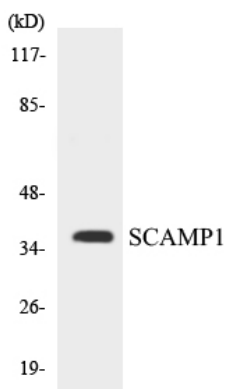
This product can be used in immunological reaction related experiments. For more information, please consult technical personnel.



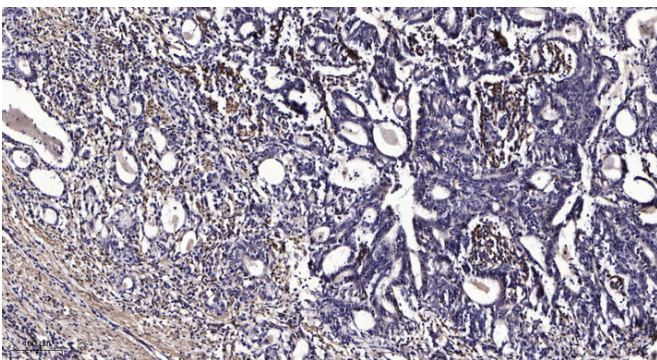
Products Images



Western blot analysis of lysates from NIH/3T3 cells, using SCAMP1 Antibody. The lane on the right is blocked with the synthesized peptide.



Western blot analysis of the lysates from HeLa cells using SCAMP1 antibody.



Immunohistochemical analysis of paraffin-embedded human Gastric adenocarcinoma. 1, Antibody was diluted at 1:200(4° overnight). 2, Tris-EDTA,pH9.0 was used for antigen retrieval. 3,Secondary antibody was diluted at 1:200(room temperature, 45min).