



# OGCP Polyclonal Antibody

<b>Catalog No</b>	BYab-00712
<b>Isotype</b>	IgG
<b>Reactivity</b>	Human;Mouse;Rat
<b>Applications</b>	WB;ELISA
<b>Gene Name</b>	SLC25A11
<b>Protein Name</b>	Mitochondrial 2-oxoglutarate/malate carrier protein
<b>Immunogen</b>	The antiserum was produced against synthesized peptide derived from human SLC25A11. AA range:132-181
<b>Specificity</b>	OGCP Polyclonal Antibody detects endogenous levels of OGCP protein.
<b>Formulation</b>	Liquid in PBS containing 50% glycerol, 0.5% BSA and 0.02% sodium azide.
<b>Source</b>	Polyclonal, Rabbit,IgG
<b>Purification</b>	The antibody was affinity-purified from rabbit antiserum by affinity-chromatography using epitope-specific immunogen.
<b>Dilution</b>	Western Blot: 1/500 - 1/2000. ELISA: 1/10000. Not yet tested in other applications.
<b>Concentration</b>	1 mg/ml
<b>Purity</b>	≥90%
<b>Storage Stability</b>	-20°C/1 year
<b>Synonyms</b>	SLC25A11; SLC20A4; Mitochondrial 2-oxoglutarate/malate carrier protein; OGCP; Solute carrier family 25 member 11
<b>Observed Band</b>	35kD
<b>Cell Pathway</b>	Mitochondrion inner membrane ; Multi-pass membrane protein .
<b>Tissue Specificity</b>	B-cell lymphoma,Brain,Muscle,Tongue,Uterus,
<b>Function</b>	function:Catalyzes the transport of 2-oxoglutarate across the inner mitochondrial membrane in an electroneutral exchange for malate or other dicarboxylic acids, and plays an important role in several metabolic processes, including the malate-aspartate shuttle, the oxoglutarate/isocitrate shuttle, in gluconeogenesis from lactate, and in nitrogen metabolism.,similarity:Belongs to the mitochondrial carrier family.,similarity:Contains 3 Solcar repeats.,
<b>Background</b>	The oxoglutarate/malate carrier transports 2-oxoglutarate across the inner membranes of mitochondria in an electroneutral exchange for malate or other dicarboxylic acids (summary by Iacobazzi et al., 1992 [PubMed

Nanjing BYabscience technology Co.,Ltd



1457818]).[supplied by OMIM, Jan 2011],

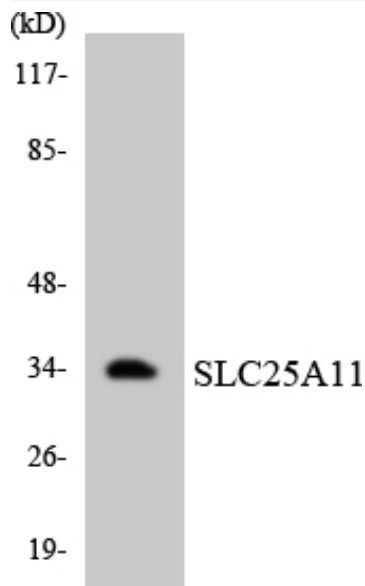
**matters needing attention**

Avoid repeated freezing and thawing!

**Usage suggestions**

This product can be used in immunological reaction related experiments. For more information, please consult technical personnel.

## Products Images



Western blot analysis of the lysates from HepG2 cells using SLC25A11 antibody.