



Nup93 Polyclonal Antibody

Catalog No	BYab-00710
Isotype	IgG
Reactivity	Human;Mouse;Rat
Applications	WB;ELISA
Gene Name	NUP93
Protein Name	Nuclear pore complex protein Nup93
Immunogen	The antiserum was produced against synthesized peptide derived from human NUP93. AA range:221-270
Specificity	Nup93 Polyclonal Antibody detects endogenous levels of Nup93 protein.
Formulation	Liquid in PBS containing 50% glycerol, 0.5% BSA and 0.02% sodium azide.
Source	Polyclonal, Rabbit,IgG
Purification	The antibody was affinity-purified from rabbit antiserum by affinity-chromatography using epitope-specific immunogen.
Dilution	Western Blot: 1/500 - 1/2000. ELISA: 1/40000. Not yet tested in other applications.
Concentration	1 mg/ml
Purity	≥90%
Storage Stability	-20°C/1 year
Synonyms	NUP93; KIAA0095; Nuclear pore complex protein Nup93; 93 kDa nucleoporin; Nucleoporin Nup93
Observed Band	93kD
Cell Pathway	Nucleus membrane ; Peripheral membrane protein . Nucleus, nuclear pore complex . Nucleus envelope . Localizes at the nuclear basket and at or near the nuclear entry to the gated channel of the pore. .
Tissue Specificity	Amygdala,Bone marrow,Brain,Epithelium,Skin,
Function	function:Part of the nucleoporin complex; required for correct nuclear pore assembly.,similarity:Belongs to the nucleoporin interacting component (NIC) family.,subcellular location:Localizes at the nuclear basket and at or near the nuclear entry to the gated channel of the pore.,subunit:Component of the p62 complex, a complex composed of NUP62, NUP54. Interacts also with NUP205.,
Background	function:Part of the nucleoporin complex; required for correct nuclear pore assembly.,similarity:Belongs to the nucleoporin interacting component (NIC) family.,subcellular location:Localizes at the nuclear basket and at or near the

Nanjing BYabscience technology Co.,Ltd



nuclear entry to the gated channel of the pore.,subunit:Component of the p62 complex, a complex composed of NUP62, NUP54. Interacts also with NUP205.,

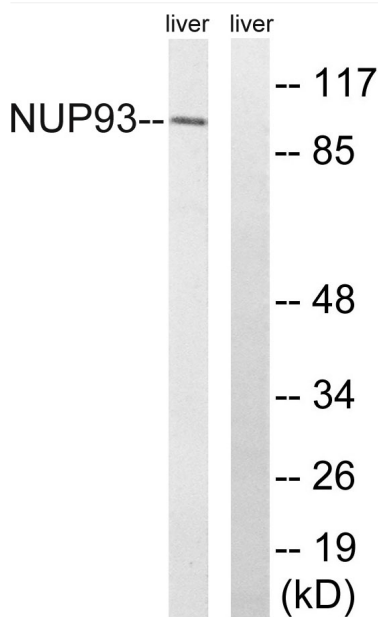
matters needing attention

Avoid repeated freezing and thawing!

Usage suggestions

This product can be used in immunological reaction related experiments. For more information, please consult technical personnel.

Products Images



Western blot analysis of lysates from rat liver cells, using NUP93 Antibody. The lane on the right is blocked with the synthesized peptide.