



YT1943

Nup160 Polyclonal Antibody

Catalog No	BYab-00709
Isotype	IgG
Reactivity	Human;Mouse
Applications	WB;ELISA
Gene Name	NUP160
Protein Name	Nuclear pore complex protein Nup160
Immunogen	The antiserum was produced against synthesized peptide derived from human NUP160. AA range:392-441
Specificity	Nup160 Polyclonal Antibody detects endogenous levels of Nup160 protein.
Formulation	Liquid in PBS containing 50% glycerol, 0.5% BSA and 0.02% sodium azide.
Source	Polyclonal, Rabbit,IgG
Purification	The antibody was affinity-purified from rabbit antiserum by affinity-chromatography using epitope-specific immunogen.
Dilution	Western Blot: 1/500 - 1/2000. ELISA: 1/20000. Not yet tested in other applications.
Concentration	1 mg/ml
Purity	≥90%
Storage Stability	-20°C/1 year
Synonyms	NUP160; KIAA0197; NUP120; Nuclear pore complex protein Nup160; 160 kDa nucleoporin; Nucleoporin Nup160
Observed Band	140kD
Cell Pathway	Nucleus, nuclear pore complex .
Tissue Specificity	Bone marrow,Epithelium,Muscle,Skin,Small intestine,Testis,Trachea,
Function	caution:It is uncertain whether Met-1 or Met-35 is the initiator.,function:Involved in poly(A)+ RNA transport.,sequence caution:Probable cloning artifact. Aberrant splice sites.,subunit:Forms part of the Nup160 subcomplex in the nuclear pore which is composed of Nup160, Nup133, Nup107 and Nup96. This complex plays a role in RNA export and in tethering Nup98 and Nup153 to the nucleus.,
Background	nucleoporin 160(NUP160) Homo sapiens NUP160 is 1 of up to 60 proteins that make up the 120-MD nuclear pore complex, which mediates nucleoplasmic transport.[supplied by OMIM, Apr 2004],

Nanjing BYabscience technology Co.,Ltd



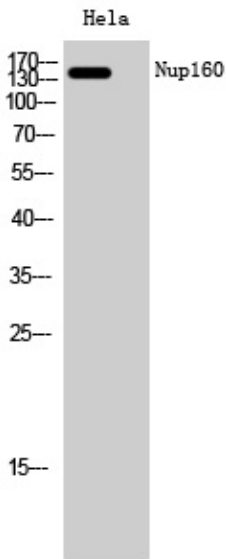
matters needing attention

Avoid repeated freezing and thawing!

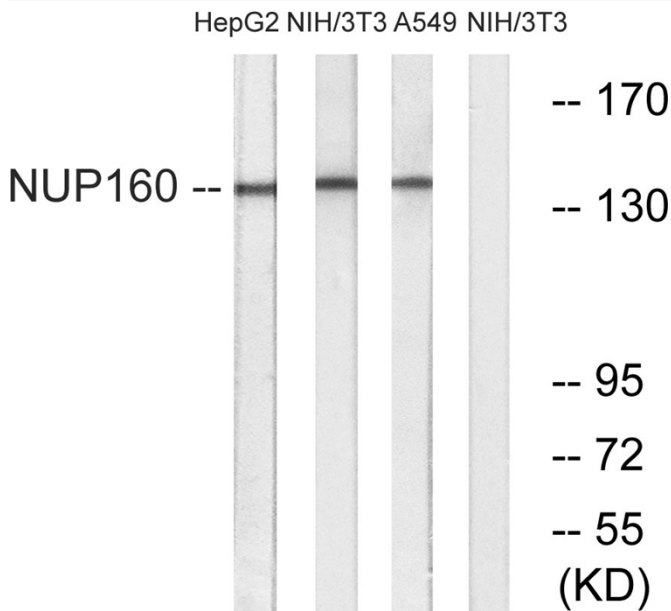
Usage suggestions

This product can be used in immunological reaction related experiments. For more information, please consult technical personnel.

Products Images



Western Blot analysis of HeLa cells using Nup160 Polyclonal Antibody diluted at 1:2000 cells nucleus extracted by Minute TM Cytoplasmic and Nuclear Fractionation kit (SC-003, Inventibiotec, MN, USA).



Western blot analysis of lysates from NIH/3T3, A549, and HepG2 cells, using NUP160 Antibody. The lane on the right is blocked with the synthesized peptide.

Nanjing BYabscience technology Co.,Ltd