



NSF Polyclonal Antibody

Catalog No	BYab-00707
Isotype	IgG
Reactivity	Human;Mouse;Rat
Applications	WB;ELISA
Gene Name	NSF
Protein Name	Vesicle-fusing ATPase
Immunogen	Synthesized peptide derived from NSF . at AA range: 110-190
Specificity	NSF Polyclonal Antibody detects endogenous levels of NSF protein.
Formulation	Liquid in PBS containing 50% glycerol, 0.5% BSA and 0.02% sodium azide.
Source	Polyclonal, Rabbit,IgG
Purification	The antibody was affinity-purified from rabbit antiserum by affinity-chromatography using epitope-specific immunogen.
Dilution	Western Blot: 1/500 - 1/2000. ELISA: 1/40000. Not yet tested in other applications.
Concentration	1 mg/ml
Purity	≥90%
Storage Stability	-20°C/1 year
Synonyms	NSF; Vesicle-fusing ATPase; N-ethylmaleimide-sensitive fusion protein; NEM-sensitive fusion protein; Vesicular-fusion protein NSF
Observed Band	75kD
Cell Pathway	Cytoplasm.
Tissue Specificity	Brain,Kidney,Lung,
Function	catalytic activity:ATP + H(2)O = ADP + phosphate.,cofactor:Binds 1 magnesium ion per subunit.,function:Required for vesicle-mediated transport. Catalyzes the fusion of transport vesicles within the Golgi cisternae. Is also required for transport from the endoplasmic reticulum to the Golgi stack. Seem to function as a fusion protein required for the delivery of cargo proteins to all compartments of the Golgi stack independent of vesicle origin.,similarity:Belongs to the AAA ATPase family.,subunit:Homohexamer. Interacts with GABARAP and GABARAPL2.,
Background	catalytic activity:ATP + H(2)O = ADP + phosphate.,cofactor:Binds 1 magnesium ion per subunit.,function:Required for vesicle-mediated transport. Catalyzes the fusion of transport vesicles within the Golgi cisternae. Is also required for transport

Nanjing BYabscience technology Co.,Ltd



from the endoplasmic reticulum to the Golgi stack. Seem to function as a fusion protein required for the delivery of cargo proteins to all compartments of the Golgi stack independent of vesicle origin.,similarity:Belongs to the AAA ATPase family.,subunit:Homohexamer. Interacts with GABARAP and GABARAPL2.,

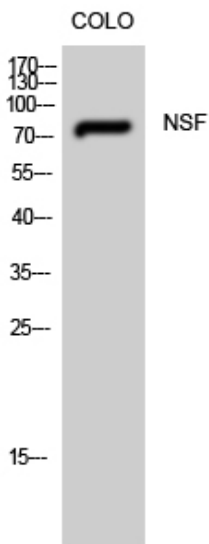
matters needing attention

Avoid repeated freezing and thawing!

Usage suggestions

This product can be used in immunological reaction related experiments. For more information, please consult technical personnel.

Products Images



Western Blot analysis of CoLo cells using NSF Polyclonal Antibody