



DBP Polyclonal Antibody

Catalog No	BYab-00691
Isotype	IgG
Reactivity	Human;Monkey
Applications	WB;ELISA
Gene Name	GC
Protein Name	Vitamin D-binding protein
Immunogen	Synthesized peptide derived from DBP . at AA range: 90-170
Specificity	DBP Polyclonal Antibody detects endogenous levels of DBP protein.
Formulation	Liquid in PBS containing 50% glycerol, 0.5% BSA and 0.02% sodium azide.
Source	Polyclonal, Rabbit,IgG
Purification	The antibody was affinity-purified from rabbit antiserum by affinity-chromatography using epitope-specific immunogen.
Dilution	Western Blot: 1/500 - 1/2000. ELISA: 1/40000. Not yet tested in other applications.
Concentration	1 mg/ml
Purity	≥90%
Storage Stability	-20°C/1 year
Synonyms	GC; Vitamin D-binding protein; DBP; VDB; Gc-globulin; Group-specific component
Observed Band	55kD
Cell Pathway	Secreted .
Tissue Specificity	Expressed in the liver. Found in plasma, ascites, cerebrospinal fluid and urine.
Function	function:Multifunctional protein found in plasma, ascitic fluid, cerebrospinal fluid, and urine and on the surface of many cell types. In plasma, it carries the vitamin D sterols and prevents polymerization of actin by binding its monomers. DBP associates with membrane-bound immunoglobulin on the surface of B-lymphocytes and with IgG Fc receptor on the membranes of T-lymphocytes.,polymorphism:Over 80 variants of human DBP have been identified. The three most common alleles are called GC*1F, GC*1S, and GC*2. The sequence shown is that of the GC*2 allele.,similarity:Belongs to the ALB/AFP/VDB family.,similarity:Contains 3 albumin domains.,

Nanjing BYabscience technology Co.,Ltd



Background

The protein encoded by this gene belongs to the albumin gene family. It is a multifunctional protein found in plasma, ascitic fluid, cerebrospinal fluid and on the surface of many cell types. It binds to vitamin D and its plasma metabolites and transports them to target tissues. Alternatively spliced transcript variants encoding different isoforms have been found for this gene.[provided by RefSeq, Feb 2011],

matters needing attention

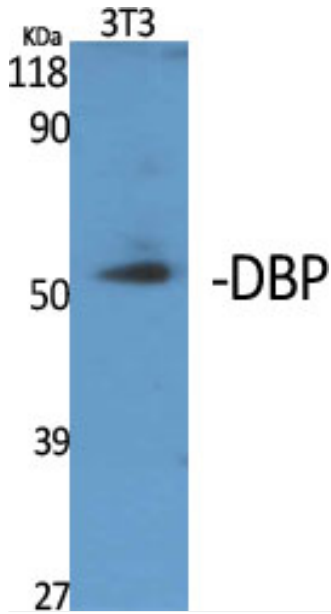
Avoid repeated freezing and thawing!

Usage suggestions

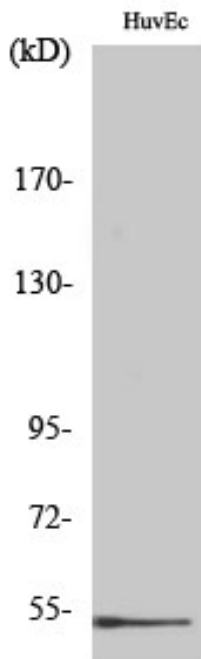
This product can be used in immunological reaction related experiments. For more information, please consult technical personnel.



Products Images



Western Blot analysis of various cells using DBP Polyclonal Antibody



Western Blot analysis of COS7 cells using DBP Polyclonal Antibody