



Arfaptin 1 Polyclonal Antibody

Catalog No	BYab-00675
Isotype	IgG
Reactivity	Human;Mouse;Rat
Applications	WB;IHC;IF;ELISA
Gene Name	ARFIP1
Protein Name	Arfaptin-1
Immunogen	The antiserum was produced against synthesized peptide derived from human ARFIP1. AA range:271-320
Specificity	Arfaptin 1 Polyclonal Antibody detects endogenous levels of Arfaptin 1 protein.
Formulation	Liquid in PBS containing 50% glycerol, 0.5% BSA and 0.02% sodium azide.
Source	Polyclonal, Rabbit,IgG
Purification	The antibody was affinity-purified from rabbit antiserum by affinity-chromatography using epitope-specific immunogen.
Dilution	Western Blot: 1/500 - 1/2000. Immunohistochemistry: 1/100 - 1/300. Immunofluorescence: 1/200 - 1/1000. ELISA: 1/40000. Not yet tested in other applications.
Concentration	1 mg/ml
Purity	≥90%
Storage Stability	-20°C/1 year
Synonyms	ARFIP1; Arfaptin-1; ADP-ribosylation factor-interacting protein 1
Observed Band	40kD
Cell Pathway	Golgi apparatus . Golgi apparatus, trans-Golgi network membrane .
Tissue Specificity	Ubiquitously expressed (PubMed:9038142). Higher levels in liver, pancreas, placenta, skeletal muscle and heart (PubMed:9038142).
Function	function:Putative target protein of ADP-ribosylation factor.,similarity:Contains 1 AH domain.,subunit:Interacts with non-myristoylated GTP-bound ARF3, but not to GDP-bound ARF3, and also to ARF1. Binds with lower affinity to ARF5 and with very little affinity to ARF6.,tissue specificity:Ubiquitously expressed. Higher levels in liver, pancreas, placenta, skeletal muscle and heart.,
Background	function:Putative target protein of ADP-ribosylation factor.,similarity:Contains 1 AH domain.,subunit:Interacts with non-myristoylated GTP-bound ARF3, but not to GDP-bound ARF3, and also to ARF1. Binds with lower affinity to ARF5 and with very little affinity to ARF6.,tissue specificity:Ubiquitously expressed. Higher levels

Nanjing BYabscience technology Co.,Ltd



in liver, pancreas, placenta, skeletal muscle and heart.,

matters needing attention

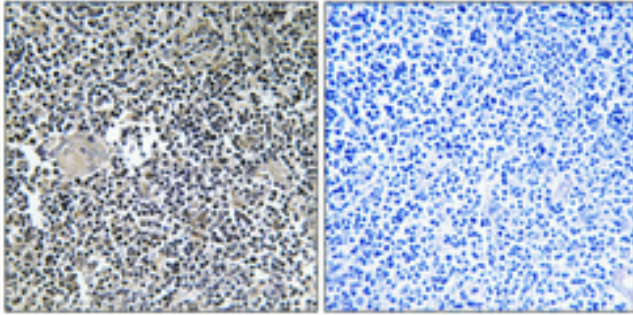
Avoid repeated freezing and thawing!

Usage suggestions

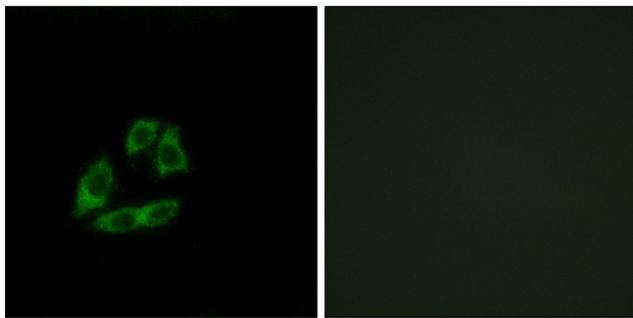
This product can be used in immunological reaction related experiments. For more information, please consult technical personnel.



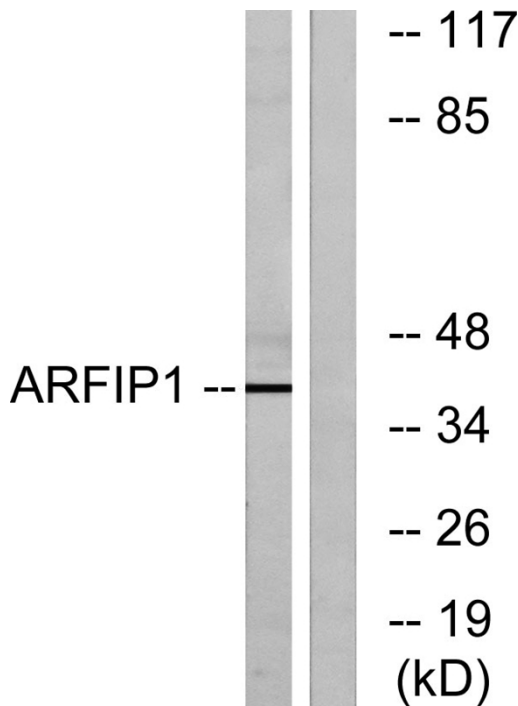
Products Images



Immunohistochemical analysis of paraffin-embedded Human thymus gland. Antibody was diluted at 1:100(4° overnight). High-pressure and temperature Tris-EDTA,pH8.0 was used for antigen retrieval. Negative contrl (right) obtained from antibody was pre-absorbed by immunogen peptide.



Immunofluorescence analysis of A549 cells, using ARFIP1 Antibody. The picture on the right is blocked with the synthesized peptide.



Western blot analysis of lysates from Jurkat cells, using ARFIP1 Antibody. The lane on the right is blocked with the synthesized peptide.