



# ApoOL Polyclonal Antibody

<b>Catalog No</b>	BYab-00674
<b>Isotype</b>	IgG
<b>Reactivity</b>	Human;Mouse;Rat
<b>Applications</b>	WB;ELISA
<b>Gene Name</b>	APOOL
<b>Protein Name</b>	Apolipoprotein O-like
<b>Immunogen</b>	The antiserum was produced against synthesized peptide derived from human APOOL. AA range:219-268
<b>Specificity</b>	ApoOL Polyclonal Antibody detects endogenous levels of ApoOL protein.
<b>Formulation</b>	Liquid in PBS containing 50% glycerol, 0.5% BSA and 0.02% sodium azide.
<b>Source</b>	Polyclonal, Rabbit,IgG
<b>Purification</b>	The antibody was affinity-purified from rabbit antiserum by affinity-chromatography using epitope-specific immunogen.
<b>Dilution</b>	Western Blot: 1/500 - 1/2000. ELISA: 1/40000. Not yet tested in other applications.
<b>Concentration</b>	1 mg/ml
<b>Purity</b>	≥90%
<b>Storage Stability</b>	-20°C/1 year
<b>Synonyms</b>	APOOL; CXorf33; FAM121A; Apolipoprotein O-like; Protein FAM121A
<b>Observed Band</b>	30kD
<b>Cell Pathway</b>	Mitochondrion inner membrane ; Multi-pass membrane protein . Mitochondrion .
<b>Tissue Specificity</b>	Liver,
<b>Function</b>	similarity:Belongs to the apolipoprotein O family.,
<b>Background</b>	This gene encodes a protein which contains an apolipoprotein O superfamily domain. This domain is found on proteins in circulating lipoprotein complexes. [provided by RefSeq, Sep 2011],
<b>matters needing attention</b>	Avoid repeated freezing and thawing!

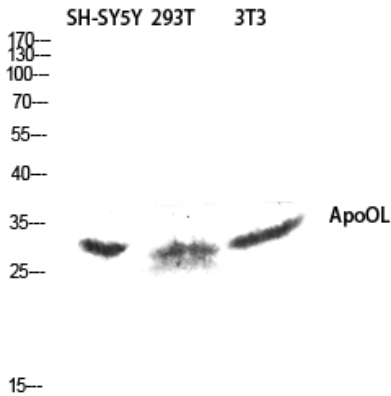
Nanjing BYabscience technology Co.,Ltd



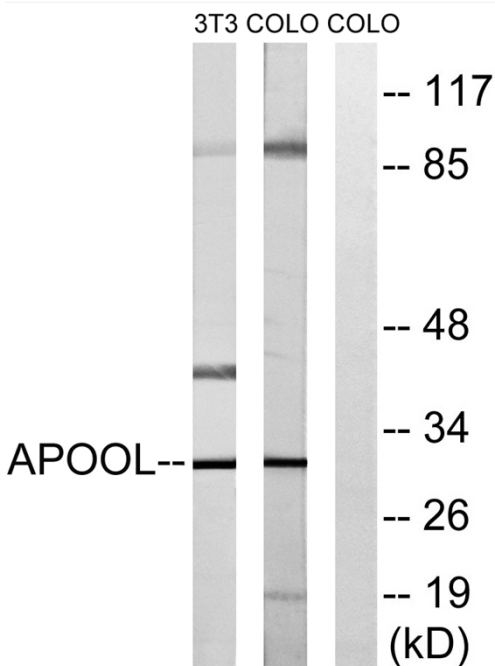
### Usage suggestions

This product can be used in immunological reaction related experiments. For more information, please consult technical personnel.

## Products Images



Western blot analysis of SH-SY5Y 293T 3T3 lysis using ApoOL antibody. Antibody was diluted at 1:1000



Western blot analysis of lysates from COLO and NIH/3T3 cells, using APOOL Antibody. The lane on the right is blocked with the synthesized peptide.

Nanjing BYabscience technology Co.,Ltd