



ApoL4 Polyclonal Antibody

Catalog No	BYab-00672
Isotype	IgG
Reactivity	Human;Rat;Mouse;
Applications	WB;IHC;IF;ELISA
Gene Name	APOL4
Protein Name	Apolipoprotein L4
Immunogen	The antiserum was produced against synthesized peptide derived from human APOL4. AA range:301-350
Specificity	ApoL4 Polyclonal Antibody detects endogenous levels of ApoL4 protein.
Formulation	Liquid in PBS containing 50% glycerol, 0.5% BSA and 0.02% sodium azide.
Source	Polyclonal, Rabbit,IgG
Purification	The antibody was affinity-purified from rabbit antiserum by affinity-chromatography using epitope-specific immunogen.
Dilution	Western Blot: 1/500 - 1/2000. Immunohistochemistry: 1/100 - 1/300. Immunofluorescence: 1/200 - 1/1000. ELISA: 1/20000. Not yet tested in other applications.
Concentration	1 mg/ml
Purity	≥90%
Storage Stability	-20°C/1 year
Synonyms	APOL4; Apolipoprotein L4; Apolipoprotein L-IV; ApoL-IV
Observed Band	34kD
Cell Pathway	Secreted .
Tissue Specificity	Widely expressed; the highest levels are in spinal cord, placenta, adrenal gland; also detected in spleen, bone marrow, uterus, trachea, mammary gland and testis; levels are low in brain, heart and pancreas.
Function	function:May play a role in lipid exchange and transport throughout the body. May participate in reverse cholesterol transport from peripheral cells to the liver.,similarity:Belongs to the apolipoprotein L family.,tissue specificity:Widely expressed; the highest levels are in spinal cord, placenta, adrenal gland; also detected in spleen, bone marrow, uterus, trachea, mammary gland and testis; levels are low in brain, heart and pancreas.,
Background	The protein encoded by this gene is a member of the apolipoprotein L family and may play a role in lipid exchange and transport throughout the body, as well as in

Nanjing BYabscience technology Co.,Ltd



reverse cholesterol transport from peripheral cells to the liver. Two transcript variants encoding two different isoforms have been found for this gene. Only one of the isoforms appears to be a secreted protein. [provided by RefSeq, Jul 2008],

matters needing attention

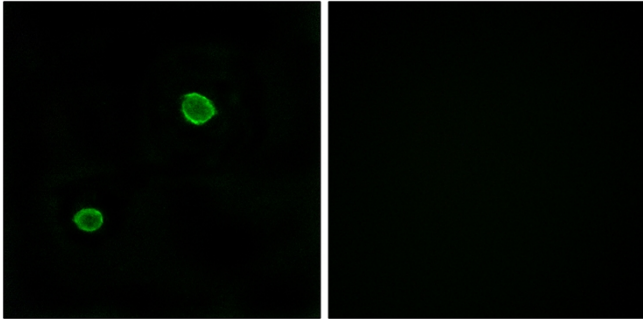
Avoid repeated freezing and thawing!

Usage suggestions

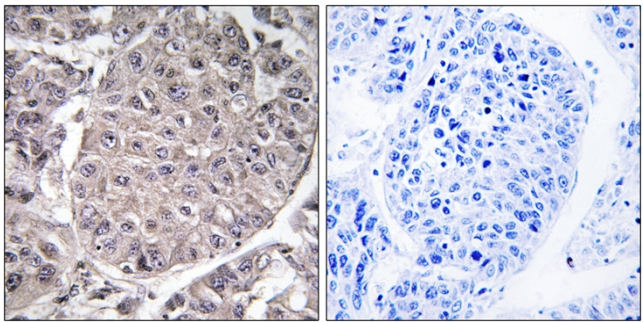
This product can be used in immunological reaction related experiments. For more information, please consult technical personnel.



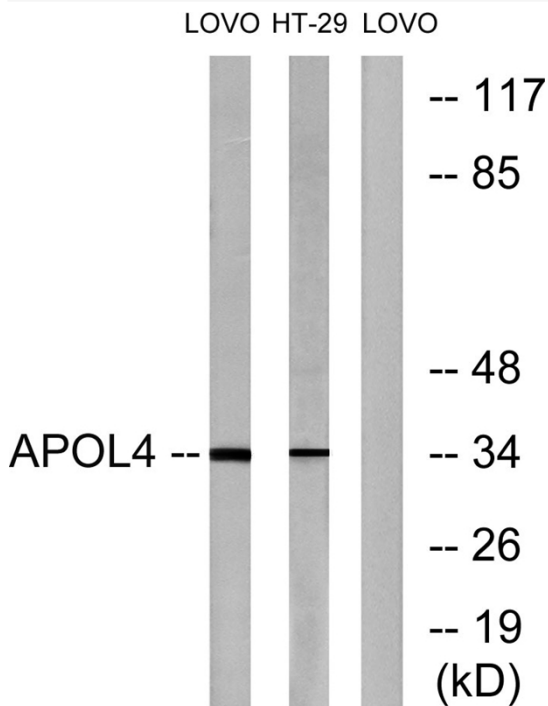
Products Images



Immunofluorescence analysis of MCF7 cells, using APOL4 Antibody. The picture on the right is blocked with the synthesized peptide.



Immunohistochemistry analysis of paraffin-embedded human liver carcinoma tissue, using APOL4 Antibody. The picture on the right is blocked with the synthesized peptide.



Western blot analysis of lysates from LOVO and HT-29 cells, using APOL4 Antibody. The lane on the right is blocked with the synthesized peptide.