



ApoL2 Polyclonal Antibody

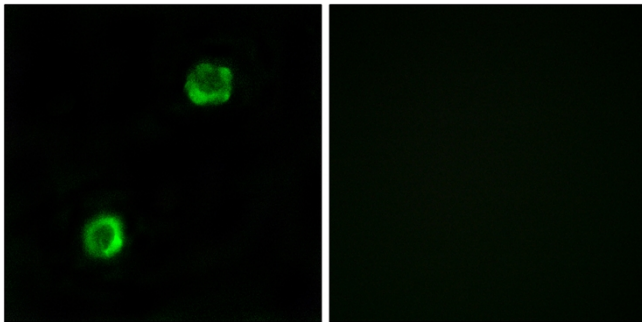
Catalog No	BYab-00670
Isotype	IgG
Reactivity	Human;Rat;Mouse;
Applications	WB;IHC;IF;ELISA
Gene Name	APOL2
Protein Name	Apolipoprotein L2
Immunogen	The antiserum was produced against synthesized peptide derived from human APOL2. AA range:191-240
Specificity	ApoL2 Polyclonal Antibody detects endogenous levels of ApoL2 protein.
Formulation	Liquid in PBS containing 50% glycerol, 0.5% BSA and 0.02% sodium azide.
Source	Polyclonal, Rabbit,IgG
Purification	The antibody was affinity-purified from rabbit antiserum by affinity-chromatography using epitope-specific immunogen.
Dilution	Western Blot: 1/500 - 1/2000. Immunohistochemistry: 1/100 - 1/300. Immunofluorescence: 1/200 - 1/1000. ELISA: 1/40000. Not yet tested in other applications.
Concentration	1 mg/ml
Purity	≥90%
Storage Stability	-20°C/1 year
Synonyms	APOL2; Apolipoprotein L2; Apolipoprotein L-II; ApoL-II
Observed Band	37kD
Cell Pathway	Cytoplasm .
Tissue Specificity	Widely expressed; the highest levels are found in lung, thymus, pancreas, placenta, adult brain and prostate; also detected in spleen, liver, kidney, colon, small intestine, uterus, spinal cord, adrenal gland, salivary gland, trachea, mammary gland, skeletal muscle, testis and fetal brain and liver.
Function	function:May affect the movement of lipids in the cytoplasm or allow the binding of lipids to organelles.,similarity:Belongs to the apolipoprotein L family.,tissue specificity:Widely expressed; the highest levels are found in lung, thymus, pancreas, placenta, adult brain and prostate; also detected in spleen, liver, kidney, colon, small intestine, uterus, spinal cord, adrenal gland, salivary gland, trachea, mammary gland, skeletal muscle, testis and fetal brain and liver.,

Nanjing BYabscience technology Co.,Ltd

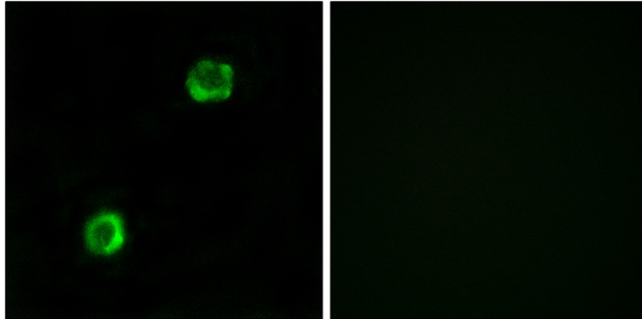


Background	This gene is a member of the apolipoprotein L gene family. The encoded protein is found in the cytoplasm, where it may affect the movement of lipids or allow the binding of lipids to organelles. Two transcript variants encoding the same protein have been found for this gene. [provided by RefSeq, Jul 2008],
matters needing attention	Avoid repeated freezing and thawing!
Usage suggestions	This product can be used in immunological reaction related experiments. For more information, please consult technical personnel.

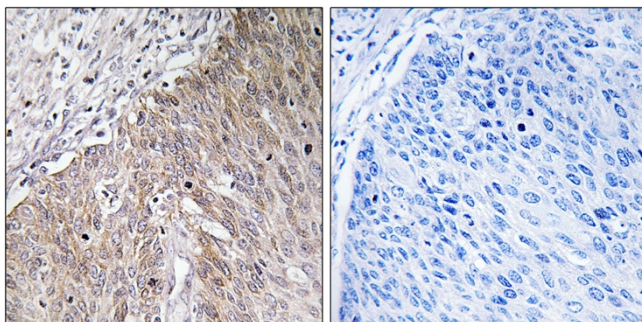
Products Images



Western Blot analysis of various cells using ApoL2 Polyclonal Antibody

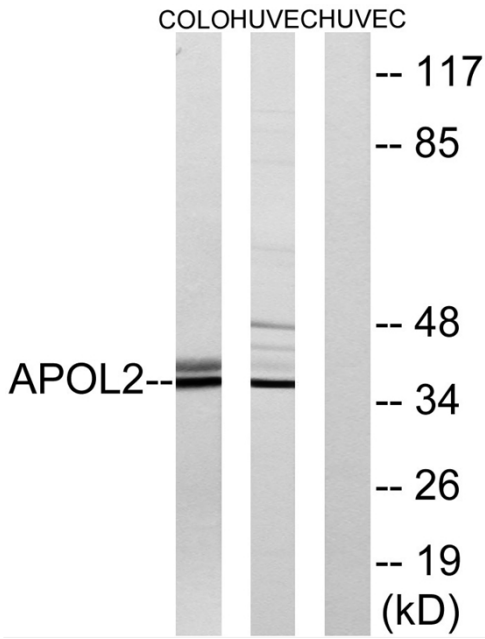


Immunofluorescence analysis of MCF7 cells, using APOL2 Antibody. The picture on the right is blocked with the synthesized peptide.

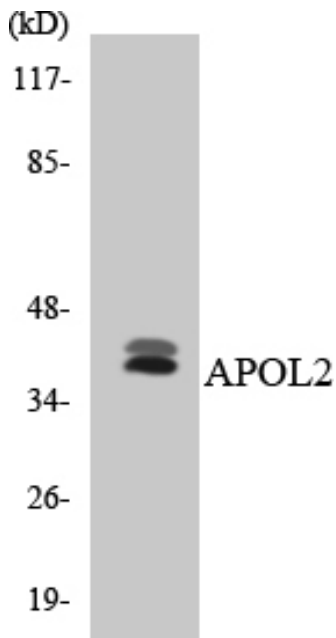


Immunohistochemistry analysis of paraffin-embedded human cervix carcinoma tissue, using APOL2 Antibody. The picture on the right is blocked with the synthesized peptide.

Nanjing BYabscience technology Co.,Ltd



Western blot analysis of lysates from HUVEC and COLO cells, using APOL2 Antibody. The lane on the right is blocked with the synthesized peptide.



Western blot analysis of the lysates from HT-29 cells using APOL2 antibody.