



ApoF Polyclonal Antibody

Catalog No	BYab-00668
Isotype	IgG
Reactivity	Human;Rat;Mouse;
Applications	WB;ELISA
Gene Name	APOF
Protein Name	Apolipoprotein F
Immunogen	The antiserum was produced against synthesized peptide derived from human APOF. AA range:221-270
Specificity	ApoF Polyclonal Antibody detects endogenous levels of ApoF protein.
Formulation	Liquid in PBS containing 50% glycerol, 0.5% BSA and 0.02% sodium azide.
Source	Polyclonal, Rabbit,IgG
Purification	The antibody was affinity-purified from rabbit antiserum by affinity-chromatography using epitope-specific immunogen.
Dilution	Western Blot: 1/500 - 1/2000. ELISA: 1/40000. Not yet tested in other applications.
Concentration	1 mg/ml
Purity	≥90%
Storage Stability	-20°C/1 year
Synonyms	APOF; Apolipoprotein F; Apo-F; Lipid transfer inhibitor protein; LTIP
Observed Band	38kD
Cell Pathway	Secreted .
Tissue Specificity	Expressed by the liver and secreted in plasma.
Function	function:Minor apolipoprotein that associates with LDL. Inhibits cholesteryl ester transfer protein (CETP) activity and appears to be an important regulator of cholesterol transport. Also associates to a lesser degree with VLDL, Apo-AI and Apo-AII.,tissue specificity:Liver. Secreted in plasma.,
Background	The product of this gene is one of the minor apolipoproteins found in plasma. This protein forms complexes with lipoproteins and may be involved in transport and/or esterification of cholesterol. [provided by RefSeq, Jul 2008],
matters needing attention	Avoid repeated freezing and thawing!

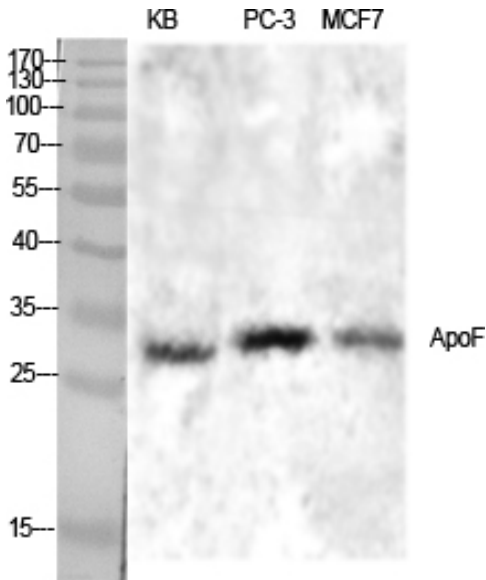
Nanjing BYabscience technology Co.,Ltd



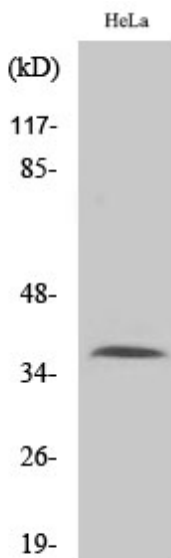
Usage suggestions

This product can be used in immunological reaction related experiments. For more information, please consult technical personnel.

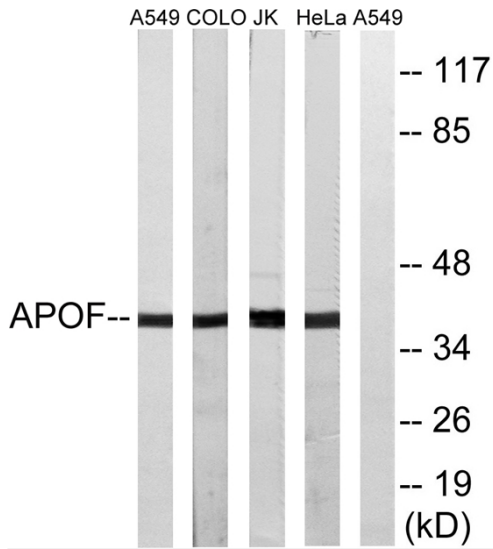
Products Images



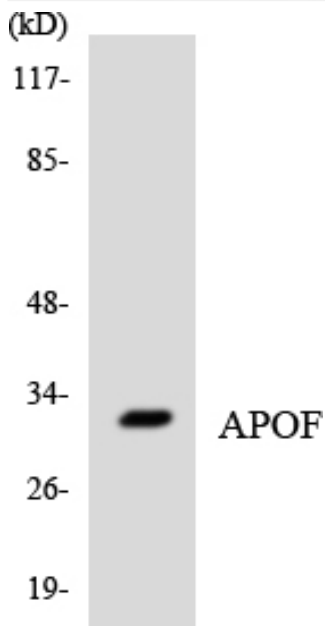
Western Blot analysis of various cells using ApoF Polyclonal Antibody diluted at 1:1000



Western Blot analysis of A549 cells using ApoF Polyclonal Antibody diluted at 1:1000



Western blot analysis of lysates from HeLa, Jurkat, COLO, and A549 cells, using APOF Antibody. The lane on the right is blocked with the synthesized peptide.



Western blot analysis of the lysates from COLO205 cells using APOF antibody.