



AI-BP Polyclonal Antibody

Catalog No	BYab-00663
Isotype	IgG
Reactivity	Human;Mouse;Rat
Applications	WB;IF;ELISA
Gene Name	APOA1BP
Protein Name	NAD(P)H-hydrate epimerase
Immunogen	The antiserum was produced against synthesized peptide derived from human AIBP. AA range:121-170
Specificity	AI-BP Polyclonal Antibody detects endogenous levels of AI-BP protein.
Formulation	Liquid in PBS containing 50% glycerol, 0.5% BSA and 0.02% sodium azide.
Source	Polyclonal, Rabbit,IgG
Purification	The antibody was affinity-purified from rabbit antiserum by affinity-chromatography using epitope-specific immunogen.
Dilution	Western Blot: 1/500 - 1/2000. Immunofluorescence: 1/200 - 1/1000. ELISA: 1/40000. Not yet tested in other applications.
Concentration	1 mg/ml
Purity	≥90%
Storage Stability	-20°C/1 year
Synonyms	APOA1BP; AIBP; YJEFN1; NAD(P)H-hydrate epimerase; Apolipoprotein A-I-binding protein; AI-BP; NAD(P)HX epimerase; YjeF N-terminal domain-containing protein 1; YjeF_N1
Observed Band	30kD
Cell Pathway	Mitochondrion . Secreted . In sperm, secretion gradually increases during capacitation. .
Tissue Specificity	Ubiquitously expressed, with highest levels in kidney, heart and liver. Present in cerebrospinal fluid and urine but not in serum from healthy patients. Present in serum of sepsis patients (at protein level).
Function	similarity:Contains 1 YjeF N-terminal domain.,subunit:Interacts with APOA1 and APOA2.,tissue specificity:Ubiquitously expressed, with highest levels in kidney, heart and liver. Present in cerebrospinal fluid and urine but not in serum from healthy patients. Present in serum of sepsis patients (at protein level).,
Background	The product of this gene interacts with apolipoprotein A-I (apoA-I), the major apolipoprotein of high-density lipoproteins (HDLs). It is secreted into some bodily

Nanjing BYabscience technology Co.,Ltd



fluids, and its synthesis and secretion are stimulated in vitro by incubating cells with apoA-I. The human genome contains related pseudogenes. [provided by RefSeq, Jul 2008],

matters needing attention

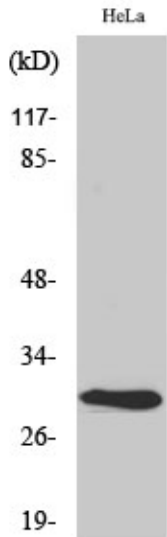
Avoid repeated freezing and thawing!

Usage suggestions

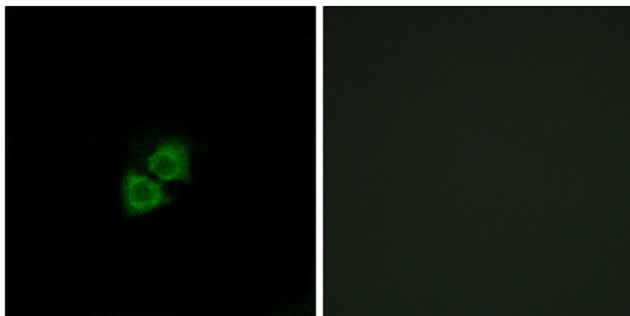
This product can be used in immunological reaction related experiments. For more information, please consult technical personnel.



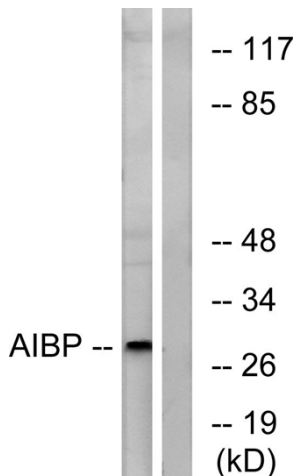
Products Images



Western Blot analysis of various cells using A1-BP Polyclonal Antibody diluted at 1:2000



Immunofluorescence analysis of A549 cells, using AIBP Antibody. The picture on the right is blocked with the synthesized peptide.



Western blot analysis of lysates from HeLa cells, using AIBP Antibody. The lane on the right is blocked with the synthesized peptide.