



ACSVL4 Polyclonal Antibody

Catalog No	BYab-00661
Isotype	IgG
Reactivity	Human;Rat;Mouse;
Applications	IF;ELISA
Gene Name	SLC27A4
Protein Name	Long-chain fatty acid transport protein 4
Immunogen	The antiserum was produced against synthesized peptide derived from human SLC27A4. AA range:61-110
Specificity	ACSVL4 Polyclonal Antibody detects endogenous levels of ACSVL4 protein.
Formulation	Liquid in PBS containing 50% glycerol, 0.5% BSA and 0.02% sodium azide.
Source	Polyclonal, Rabbit,IgG
Purification	The antibody was affinity-purified from rabbit antiserum by affinity-chromatography using epitope-specific immunogen.
Dilution	Immunofluorescence: 1/200 - 1/1000. ELISA: 1/20000. Not yet tested in other applications.
Concentration	1 mg/ml
Purity	≥90%
Storage Stability	-20°C/1 year
Synonyms	SLC27A4; ACSVL4; FATP4; Long-chain fatty acid transport protein 4; FATP-4; Fatty acid transport protein 4; Solute carrier family 27 member 4
Observed Band	
Cell Pathway	Endoplasmic reticulum membrane ; Multi-pass membrane protein .
Tissue Specificity	Expressed at highest levels in brain, testis, colon and kidney. Expressed at medium levels in heart and liver, small intestine and stomach. Expressed at low levels in peripheral leukocytes, bone marrow, skeletal muscle and aorta. Expressed in adipose tissue (PubMed:24269233, PubMed:9878842). Expressed in brain gray matter (PubMed:21395585).
Function	function:Involved in translocation of long-chain fatty acids (LFCA) across the plasma membrane. Appears to be the principal fatty acid transporter in small intestinal enterocytes. Plays a role in the formation of the epidermal barrier. Required for fat absorption in early embryogenesis. Has acyl-CoA ligase activity for long-chain and very-long-chain fatty acids.,miscellaneous:SLC27A4/FATP4-mediated fatty acid uptake is associated to paramaters related to insulin resistance, which is associated with disturbed

Nanjing BYabscience technology Co.,Ltd



fatty acid metabolism and homeostasis, such as obesity. SLC27A4/FATP4 expression is positively correlated with acquired obesity. Similarity: Belongs to the ATP-dependent AMP-binding enzyme family. Tissue specificity: Expressed at highest levels in brain, testis, colon and kidney. Expressed at medium levels in heart and liver, small intestine and stomach. Expressed at low levels in perip

Background

This gene encodes a member of a family of fatty acid transport proteins, which are involved in translocation of long-chain fatty acids across the plasma membrane. This protein is expressed at high levels on the apical side of mature enterocytes in the small intestine, and appears to be the principal fatty acid transporter in enterocytes. Clinical studies suggest this gene as a candidate gene for the insulin resistance syndrome. Mutations in this gene have been associated with ichthyosis prematurity syndrome. [provided by RefSeq, Apr 2010],

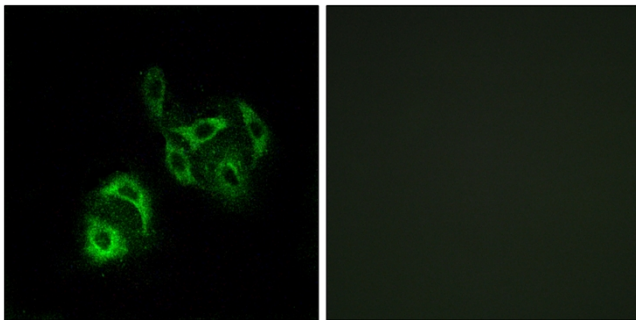
matters needing attention

Avoid repeated freezing and thawing!

Usage suggestions

This product can be used in immunological reaction related experiments. For more information, please consult technical personnel.

Products Images



Immunofluorescence analysis of A549 cells, using SLC27A4 Antibody. The picture on the right is blocked with the synthesized peptide.