



ACBD6 Polyclonal Antibody

Catalog No	BYab-00660
Isotype	IgG
Reactivity	Human;Mouse;Rat
Applications	WB;IHC;IF;ELISA
Gene Name	ACBD6
Protein Name	Acyl-CoA-binding domain-containing protein 6
Immunogen	The antiserum was produced against synthesized peptide derived from human ACBD6. AA range:121-170
Specificity	ACBD6 Polyclonal Antibody detects endogenous levels of ACBD6 protein.
Formulation	Liquid in PBS containing 50% glycerol, 0.5% BSA and 0.02% sodium azide.
Source	Polyclonal, Rabbit,IgG
Purification	The antibody was affinity-purified from rabbit antiserum by affinity-chromatography using epitope-specific immunogen.
Dilution	WB: 1/500 - 1/2000. IHC: 1/100 - 1/300. ELISA: 1/10000.. IF 1:50-200
Concentration	1 mg/ml
Purity	≥90%
Storage Stability	-20°C/1 year
Synonyms	ACBD6; Acyl-CoA-binding domain-containing protein 6
Observed Band	30kD
Cell Pathway	Cytoplasm .
Tissue Specificity	Detected in placenta and spleen (at protein level). Detected in placenta, umbilical cord blood, CD34-positive hematopoietic progenitor cells and bone marrow.
Function	function: Binds long-chain acyl-coenzyme A molecules with a strong preference for unsaturated C18:1-CoA, lower affinity for unsaturated C20:4-CoA, and very weak affinity for saturated C16:0-CoA. Does not bind fatty acids.,similarity: Contains 1 ACB (acyl-CoA-binding) domain.,similarity: Contains 2 ANK repeats.,subunit: Monomer.,tissue specificity: Detected in placenta and spleen (at protein level). Detected in placenta, umbilical cord blood, CD34-positive hematopoietic progenitor cells and bone marrow.,
Background	function: Binds long-chain acyl-coenzyme A molecules with a strong preference for unsaturated C18:1-CoA, lower affinity for unsaturated C20:4-CoA, and very weak affinity for saturated C16:0-CoA. Does not bind fatty acids.,similarity: Contains 1

Nanjing BYabscience technology Co.,Ltd



ACB (acyl-CoA-binding) domain.,similarity:Contains 2 ANK repeats.,subunit:Monomer.,tissue specificity:Detected in placenta and spleen (at protein level). Detected in placenta, umbilical cord blood, CD34-positive hematopoietic progenitor cells and bone marrow.,

matters needing attention

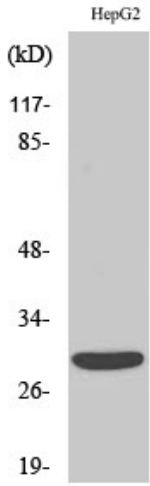
Avoid repeated freezing and thawing!

Usage suggestions

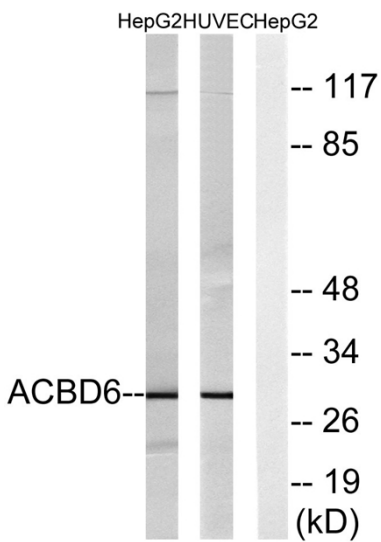
This product can be used in immunological reaction related experiments. For more information, please consult technical personnel.



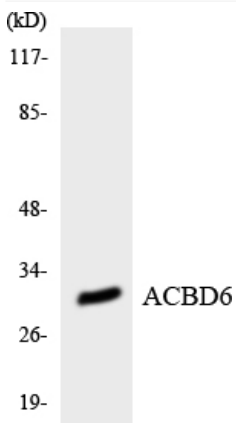
Products Images



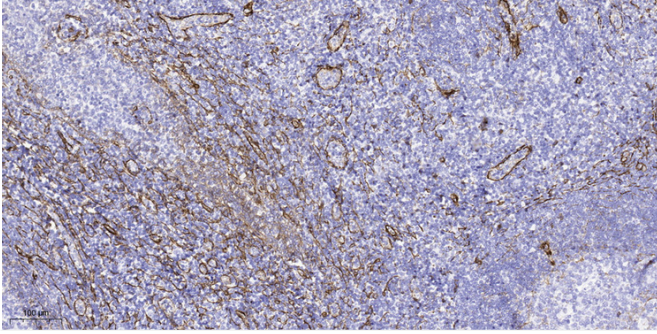
Western Blot analysis of various cells using ACBD6 Polyclonal Antibody diluted at 1:1000



Western blot analysis of lysates from HepG2 and HUVEC cells, using ACBD6 Antibody. The lane on the right is blocked with the synthesized peptide.



Western blot analysis of the lysates from K562 cells using ACBD6 antibody.



Immunohistochemical analysis of paraffin-embedded human tonsil. 1, Tris-EDTA, pH9.0 was used for antigen retrieval. 2 Antibody was diluted at 1:200(4° overnight). 3, Secondary antibody was diluted at 1:200(room temperature, 45min).