



# ABCF1 Polyclonal Antibody

<b>Catalog No</b>	BYab-00657
<b>Isotype</b>	IgG
<b>Reactivity</b>	Human;Mouse;Rat
<b>Applications</b>	WB;ELISA
<b>Gene Name</b>	ABCF1
<b>Protein Name</b>	ATP-binding cassette sub-family F member 1
<b>Immunogen</b>	Synthesized peptide derived from ABCF1 . at AA range: 760-840
<b>Specificity</b>	ABCF1 Polyclonal Antibody detects endogenous levels of ABCF1 protein.
<b>Formulation</b>	Liquid in PBS containing 50% glycerol, 0.5% BSA and 0.02% sodium azide.
<b>Source</b>	Polyclonal, Rabbit,IgG
<b>Purification</b>	The antibody was affinity-purified from rabbit antiserum by affinity-chromatography using epitope-specific immunogen.
<b>Dilution</b>	Western Blot: 1/500 - 1/2000. ELISA: 1/10000. Not yet tested in other applications.
<b>Concentration</b>	1 mg/ml
<b>Purity</b>	≥90%
<b>Storage Stability</b>	-20°C/1 year
<b>Synonyms</b>	ABCF1; ABC50; ATP-binding cassette sub-family F member 1; ATP-binding cassette 50; TNF-alpha-stimulated ABC protein
<b>Observed Band</b>	95kD
<b>Cell Pathway</b>	[Isoform 2]: Cytoplasm . Nucleus, nucleoplasm . Nucleus envelope .
<b>Tissue Specificity</b>	Ubiquitous.
<b>Function</b>	function:May function in mRNA translation.,induction:By TNF (in cultured synoviocytes).,PTM:Phosphorylated upon DNA damage, probably by ATM or ATR.,similarity:Belongs to the ABC transporter family.,similarity:Belongs to the ABC transporter family. EF3 subfamily.,similarity:Contains 2 ABC transporter domains.,subunit:Interacts with eukaryotic initiation factor 2 (eIF2). Associates with the ribosomes.,tissue specificity:Ubiquitous.,
<b>Background</b>	The protein encoded by this gene is a member of the superfamily of ATP-binding cassette (ABC) transporters. ABC proteins transport various molecules across extra- and intra-cellular membranes. ABC genes are divided into seven distinct subfamilies (ABC1, MDR/TAP, MRP, ALD, OABP, GCN20, White). This protein is

Nanjing BYabscience technology Co.,Ltd



a member of the GCN20 subfamily. Unlike other members of the superfamily, this protein lacks the transmembrane domains which are characteristic of most ABC transporters. This protein may be regulated by tumor necrosis factor-alpha and play a role in enhancement of protein synthesis and the inflammation process. [provided by RefSeq, Jul 2008],

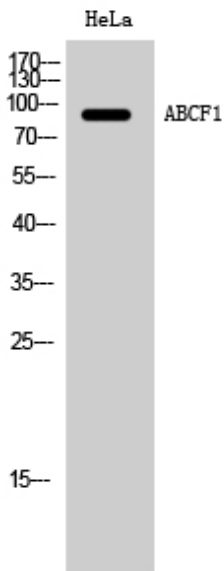
**matters needing attention**

Avoid repeated freezing and thawing!

**Usage suggestions**

This product can be used in immunological reaction related experiments. For more information, please consult technical personnel.

## Products Images



Western Blot analysis of HeLa cells using ABCF1 Polyclonal Antibody