



ABCB5 Monoclonal Antibody(11A2)

Catalog No	BYab-00626
Isotype	IgG
Reactivity	Human
Applications	WB;IHC;IF;
Gene Name	ABCB5
Protein Name	ATP-binding cassette sub-family B member 5
Immunogen	Synthetic Peptide of ABCB5
Specificity	The antibody detects endogenous ABCB5 proteins.
Formulation	PBS, pH 7.4, containing 0.5%BSA, 0.02% sodium azide as Preservative and 50% Glycerol.
Source	Monoclonal, Mouse
Purification	The antibody was affinity-purified from mouse ascites by affinity-chromatography using specific immunogen.
Dilution	WB: 1:2000 IF 1:200 IHC 1:50-300
Concentration	1 mg/ml
Purity	≥90%
Storage Stability	-20°C/1 year
Synonyms	ABCB5; ATP-binding cassette sub-family B member 5; ABCB5 P-gp; P-glycoprotein ABCB5
Observed Band	90kD
Cell Pathway	Cell membrane ; Multi-pass membrane protein .
Tissue Specificity	Expressed by CD133-expressing progenitor cells among epidermal melanocytes (at protein level). Widely expressed with specific expression in pigment cells. Highly expressed in several malignant tissues: highly expressed in clinical melanomas, with low expression in normal skin. In melanoma, marks malignant melanoma-initiating cells (MMIC), in which clinical virulence resides as a consequence of unlimited self-renewal capacity, resulting in inexorable tumor progression and metastasis. Also highly expressed in a number of leukemia cells. Expressed in basal limbal epithelium.
Function	caution:The sequence shown here is derived from an Ensembl automatic analysis pipeline and should be considered as preliminary data.,caution:Was named ABCB1 by some authors.,function:Plasma membrane transporter able to mediate efflux from cells of the rhodamine dye and of the therapeutic drug doxorubicin.

Nanjing BYabscience technology Co.,Ltd



Responsible for the resistance to doxorubicin of a subset of malignant melanomas.,miscellaneous:Depletion of ABCB5 by RNAi increases the sensitivity to several drugs of a subset of melanoma cells.,similarity:Belongs to the ABC transporter family.,similarity:Belongs to the ABC transporter family. Multidrug resistance exporter (TC 3.A.1.201) subfamily.,similarity:Contains 1 ABC transmembrane type-1 domain.,similarity:Contains 1 RRM (RNA recognition motif) domain.,similarity:Contains 2 ABC transporter domains.,subunit:Component of the U11/U12 snRNPs that are part of the U12-type spliceosom

Background

ABCB5 belongs to the ATP-binding cassette (ABC) transporter superfamily of integral membrane proteins. These proteins participate in ATP-dependent transmembrane transport of structurally diverse molecules ranging from small ions, sugars, and peptides to more complex organic molecules (Chen et al., 2005 [PubMed 15760339]).[supplied by OMIM, Mar 2008],

matters needing attention

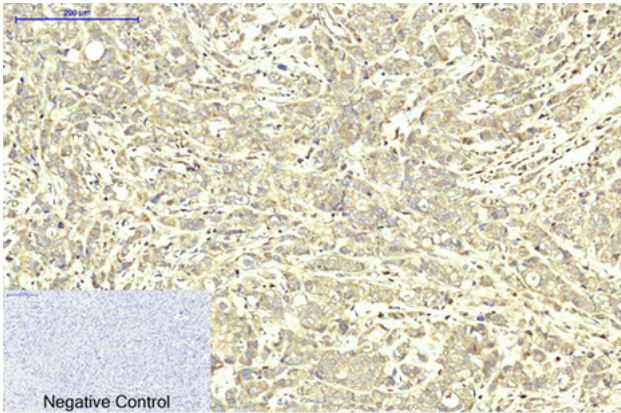
Avoid repeated freezing and thawing!

Usage suggestions

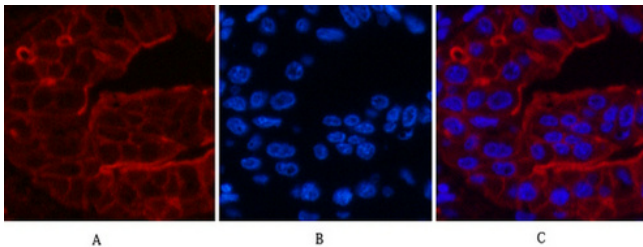
This product can be used in immunological reaction related experiments. For more information, please consult technical personnel.



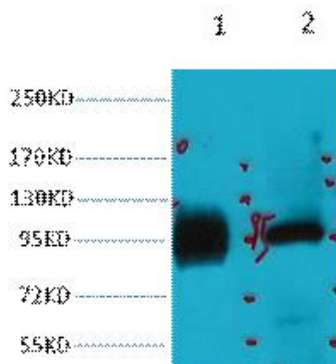
Products Images



Immunohistochemical analysis of paraffin-embedded Human-breast-cancer tissue. 1, ABCB5 Monoclonal Antibody(11A2) was diluted at 1:200(4°C, overnight). 2, Sodium citrate pH 6.0 was used for antibody retrieval(>98°C, 20min). 3, Secondary antibody was diluted at 1:200(room temperature, 30min). Negative control was used by secondary antibody only.



Immunofluorescence analysis of Human-liver-cancer tissue. 1, ABCB5 Monoclonal Antibody(11A2)(red) was diluted at 1:200(4°C, overnight). 2, Cy3 labeled Secondary antibody was diluted at 1:300(room temperature, 50min). 3, Picture B: DAPI(blue) 10min. Picture A: Target. Picture B: DAPI. Picture C: merge of A+B



Western blot analysis of 1) HeLa, 2) 293T, diluted at 1:2000. cells nucleus extracted by Minute TM Cytoplasmic and Nuclear Fractionation kit (SC-003, Invent biotech, MN, USA).