



MUM1 Polyclonal Antibody

Catalog No	BYab-00586
Isotype	IgG
Reactivity	Human;Mouse;Rat
Applications	WB;ELISA;IHC
Gene Name	MUM1 EXPAND1
Protein Name	MUM1
Immunogen	The antiserum was produced against synthesized peptide derived from the C-terminal region of human MUM1. AA range:661-710
Specificity	MUM1 Polyclonal Antibody detects endogenous levels of MUM1
Formulation	Liquid in PBS containing 50% glycerol, 0.5% BSA and 0.02% sodium azide.
Source	Polyclonal, Rabbit,IgG
Purification	The antibody was affinity-purified from rabbit antiserum by affinity-chromatography using epitope-specific immunogen.
Dilution	WB 1:500-2000;IHC-p 1:50-300; ELISA 2000-20000
Concentration	1 mg/ml
Purity	≥90%
Storage Stability	-20°C/1 year
Synonyms	melanoma associated antigen (mutated) 1
Observed Band	78kD
Cell Pathway	Nucleus . Recruited to DNA damage sites via its interaction with the BRCT domain of TP53BP1.
Tissue Specificity	Brain,Melanoma,Placenta,PNS,Thyroid,
Function	PTM:Phosphorylated upon DNA damage, probably by ATM or ATR.,similarity:Belongs to the MUM1 family.,
Background	PTM:Phosphorylated upon DNA damage, probably by ATM or ATR.,similarity:Belongs to the MUM1 family.,
matters needing attention	Avoid repeated freezing and thawing!

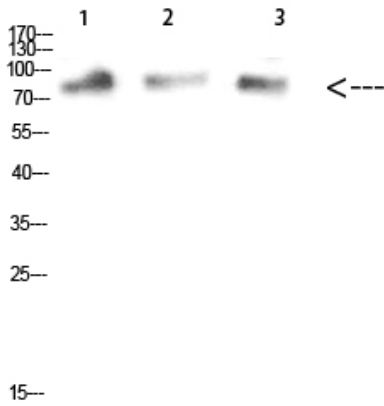
Nanjing BYabscience technology Co.,Ltd



Usage suggestions

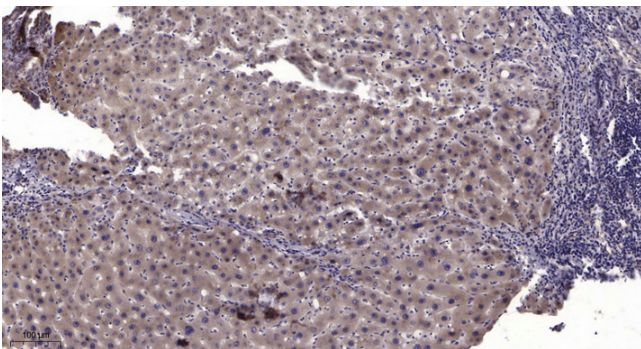
This product can be used in immunological reaction related experiments. For more information, please consult technical personnel.

Products Images



1,mouse-kidney 2,mouse-heart 3,mouse-brain

Western Blot analysis of mouse-kidney mouse-heart mouse-brain cells using MUM1 Polyclonal Antibody diluted at 1:1000. Secondary antibody(catalog#:RS0002) was diluted at 1:20000



Immunohistochemical analysis of paraffin-embedded human liver cancer. 1, Antibody was diluted at 1:200(4° overnight). 2, Tris-EDTA,pH9.0 was used for antigen retrieval. 3,Secondary antibody was diluted at 1:200(room temperature, 45min).