



ARP Polyclonal Antibody

Catalog No	BYab-00572
Isotype	IgG
Reactivity	Human;Mouse;Rat
Applications	WB;IHC;IF;ELISA
Gene Name	MANF
Protein Name	Mesencephalic astrocyte-derived neurotrophic factor
Immunogen	The antiserum was produced against synthesized peptide derived from the Internal region of human MANF. AA range:11-60
Specificity	ARP Polyclonal Antibody detects endogenous levels of ARP protein.
Formulation	Liquid in PBS containing 50% glycerol, 0.5% BSA and 0.02% sodium azide.
Source	Polyclonal, Rabbit,IgG
Purification	The antibody was affinity-purified from rabbit antiserum by affinity-chromatography using epitope-specific immunogen.
Dilution	WB: 1/500 - 1/2000. IHC-p: 1/100-1/300. ELISA: 1/20000.. IF 1:50-200
Concentration	1 mg/ml
Purity	≥90%
Storage Stability	-20°C/1 year
Synonyms	MANF; ARMET; ARP; Mesencephalic astrocyte-derived neurotrophic factor; Arginine-rich protein; Protein ARMET
Observed Band	20kD
Cell Pathway	Secreted . Endoplasmic reticulum lumen . Sarcoplasmic reticulum lumen . Retained in the endoplasmic reticulum (ER), and sarcoplasmic reticulum (SR) under normal conditions (PubMed:22637475). Up-regulated and secreted by the ER/SR in response to ER stress and hypoxia (PubMed:22637475, PubMed:29497057). .
Tissue Specificity	Testis,
Function	response to unfolded protein, response to organic substance, response to protein stimulus,
Background	The protein encoded by this gene is localized in the endoplasmic reticulum (ER) and golgi, and is also secreted. Reducing expression of this gene increases susceptibility to ER stress-induced death and results in cell proliferation. Activity of this protein is important in promoting the survival of dopaminergic neurons. The

Nanjing BYabscience technology Co.,Ltd



presence of polymorphisms in the N-terminal arginine-rich region, including a specific mutation that changes an ATG start codon to AGG, have been reported in a variety of solid tumors; however, these polymorphisms were later shown to exist in normal tissues and are thus no longer thought to be tumor-related. [provided by RefSeq, Apr 2014],

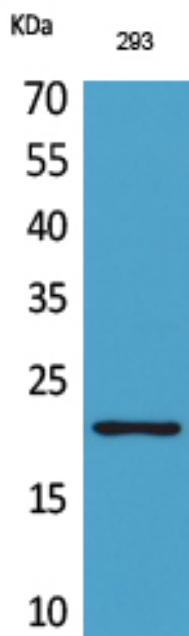
matters needing attention

Avoid repeated freezing and thawing!

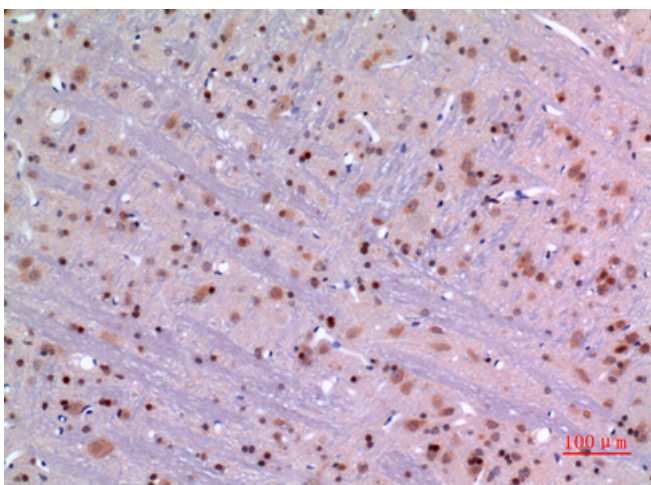
Usage suggestions

This product can be used in immunological reaction related experiments. For more information, please consult technical personnel.

Products Images

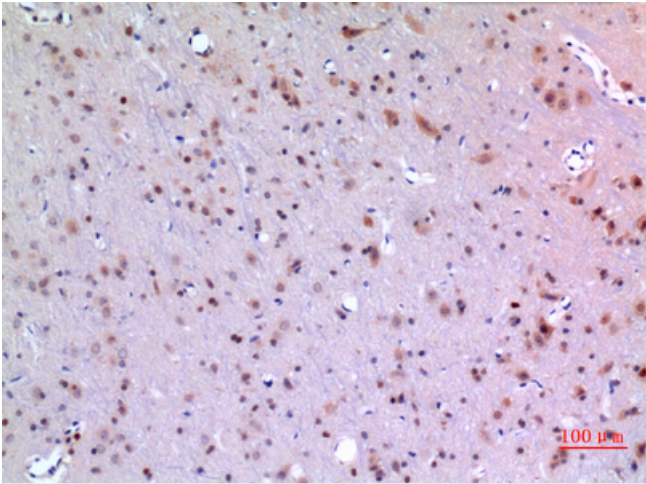


Western Blot analysis of 293 cells using ARP Polyclonal Antibody. Secondary antibody(catalog#:RS0002) was diluted at 1:20000

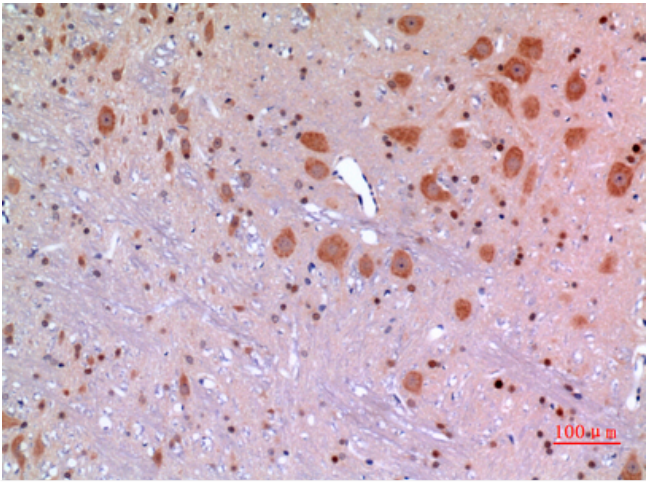


Immunohistochemical analysis of paraffin-embedded rat-brain, antibody was diluted at 1:100

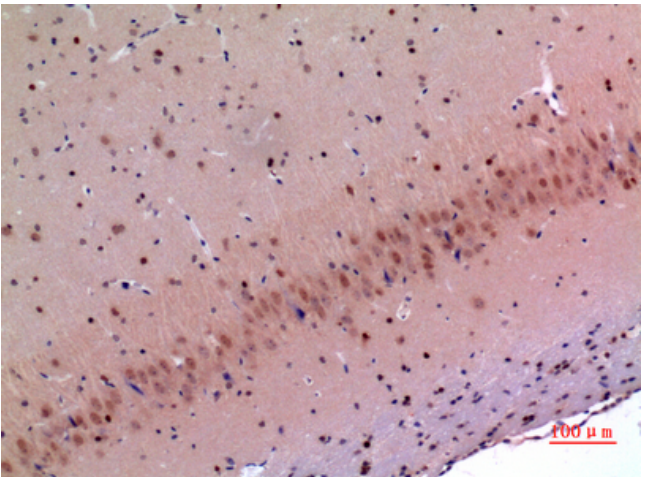
Nanjing BYabscience technology Co.,Ltd



Immunohistochemical analysis of paraffin-embedded rat-brain, antibody was diluted at 1:100



Immunohistochemical analysis of paraffin-embedded rat-brain, antibody was diluted at 1:100



Immunohistochemical analysis of paraffin-embedded mouse-brain, antibody was diluted at 1:100