



# BRMS-1 Polyclonal Antibody

<b>Catalog No</b>	BYab-00566
<b>Isotype</b>	IgG
<b>Reactivity</b>	Human;Mouse;Rat
<b>Applications</b>	WB;ELISA
<b>Gene Name</b>	BRMS1
<b>Protein Name</b>	Breast cancer metastasis-suppressor 1
<b>Immunogen</b>	The antiserum was produced against synthesized peptide derived from the C-terminal region of human BRMS1. AA range:197-246
<b>Specificity</b>	BRMS-1 Polyclonal Antibody detects endogenous levels of BRMS-1 protein.
<b>Formulation</b>	Liquid in PBS containing 50% glycerol, 0.5% BSA and 0.02% sodium azide.
<b>Source</b>	Polyclonal, Rabbit,IgG
<b>Purification</b>	The antibody was affinity-purified from rabbit antiserum by affinity-chromatography using epitope-specific immunogen.
<b>Dilution</b>	Western Blot: 1/500 - 1/2000. ELISA: 1/20000. Not yet tested in other applications.
<b>Concentration</b>	1 mg/ml
<b>Purity</b>	≥90%
<b>Storage Stability</b>	-20°C/1 year
<b>Synonyms</b>	BRMS1; Breast cancer metastasis-suppressor 1
<b>Observed Band</b>	28kD
<b>Cell Pathway</b>	Nucleus. Cytoplasm. Predominantly nuclear.
<b>Tissue Specificity</b>	Expression levels are higher in term placentas than in early placentas. Low levels of expression observed in normal pregnancies and in molar pregnancies.
<b>Function</b>	function:May be a mediator of metastasis suppression in breast carcinoma.,similarity:Belongs to the BRMS1 family.,tissue specificity:Expression levels are higher in term placentas than in early placentas. Low levels of expression observed in normal pregnancies and in molar pregnancies.,
<b>Background</b>	This gene reduces the metastatic potential, but not the tumorigenicity, of human breast cancer and melanoma cell lines. The protein encoded by this gene localizes primarily to the nucleus and is a component of the mSin3a family of histone deacetylase complexes (HDAC). The protein contains two coiled-coil motifs and several imperfect leucine zipper motifs. Alternative splicing results in two transcript variants encoding different isoforms. [provided by RefSeq, Jul

Nanjing BYabscience technology Co.,Ltd



2008],

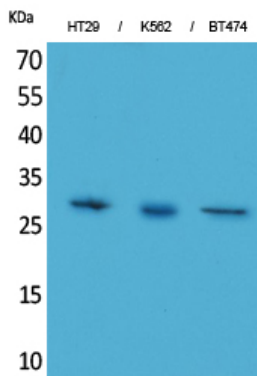
**matters needing attention**

Avoid repeated freezing and thawing!

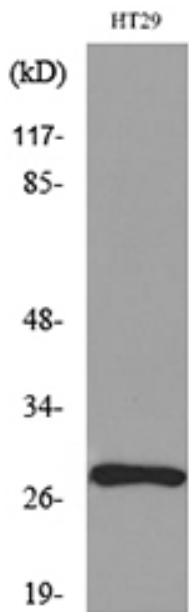
**Usage suggestions**

This product can be used in immunological reaction related experiments. For more information, please consult technical personnel.

## Products Images



Western Blot analysis of HT29, K562, BT474 cells using BRMS-1 Polyclonal Antibody. Secondary antibody(catalog#:RS0002) was diluted at 1:20000



Western blot analysis of lysate from HT29 cells, using BRMS1 Antibody.