



Latexin Polyclonal Antibody

Catalog No	BYab-00562
Isotype	IgG
Reactivity	Human;Mouse;Rat
Applications	WB;IHC;IF;ELISA
Gene Name	LXN
Protein Name	Latexin
Immunogen	Synthesized peptide derived from Latexin . at AA range: 90-170
Specificity	Latexin Polyclonal Antibody detects endogenous levels of Latexin protein.
Formulation	Liquid in PBS containing 50% glycerol, 0.5% BSA and 0.02% sodium azide.
Source	Polyclonal, Rabbit,IgG
Purification	The antibody was affinity-purified from rabbit antiserum by affinity-chromatography using epitope-specific immunogen.
Dilution	WB: 1/500 - 1/2000. IHC-p: 1:100-300 ELISA: 1/20000.. IF 1:50-200
Concentration	1 mg/ml
Purity	≥90%
Storage Stability	-20°C/1 year
Synonyms	LXN; Latexin; Endogenous carboxypeptidase inhibitor; ECI; Protein MUM; Tissue carboxypeptidase inhibitor; TCI
Observed Band	25kD
Cell Pathway	Cytoplasm .
Tissue Specificity	Highly expressed in heart, prostate, ovary, kidney, pancreas, and colon, moderate or low in other tissues including brain.
Function	function:Hardly reversible, non-competitive, and potent inhibitor of CPA1, CPA2 and CPA4.,similarity:Belongs to the protease inhibitor I47 (latexin) family.,tissue specificity:Highly expressed in heart, prostate, ovary, kidney, pancreas, and colon, moderate or low in other tissues including brain.,
Background	This gene encodes the only known protein inhibitor of zinc-dependent metalloproteases. [provided by RefSeq, Oct 2008],
matters needing attention	Avoid repeated freezing and thawing!

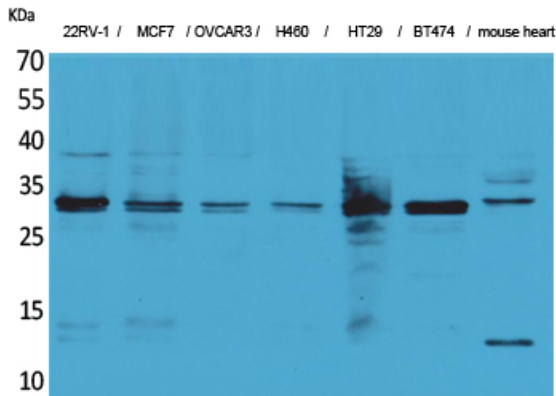
Nanjing BYabscience technology Co.,Ltd



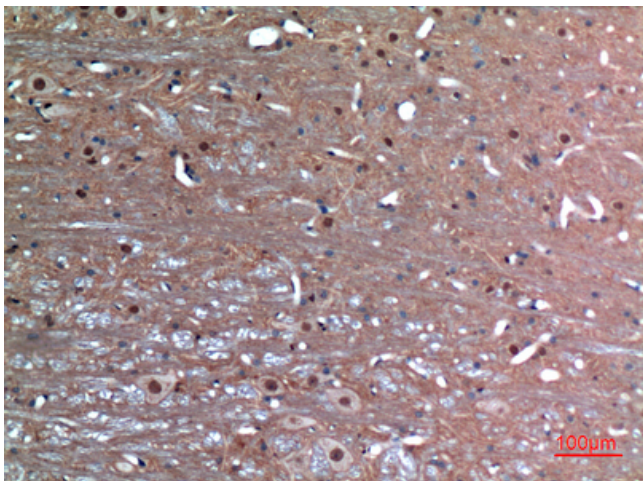
Usage suggestions

This product can be used in immunological reaction related experiments. For more information, please consult technical personnel.

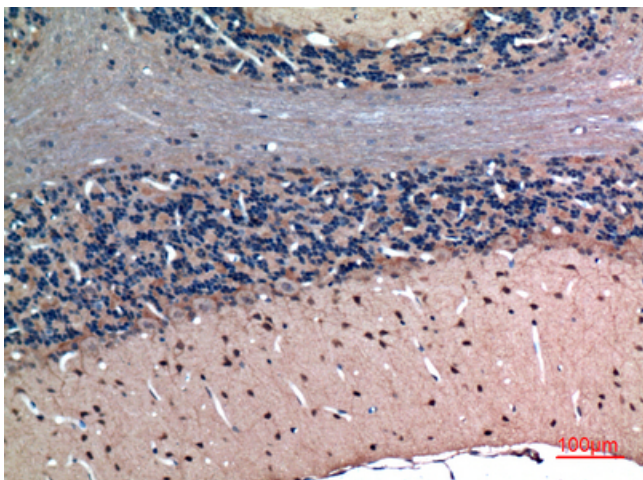
Products Images



Western Blot analysis of 22RV-1, MCF7, OVCAR3, H460, HT29, BT474, mouse heart cells using Latexin Polyclonal Antibody. Secondary antibody(catalog#:RS0002) was diluted at 1:20000



Immunohistochemical analysis of paraffin-embedded rat-brain, antibody was diluted at 1:100



Immunohistochemical analysis of paraffin-embedded rat-brain, antibody was diluted at 1:100

Nanjing BYabscience technology Co.,Ltd